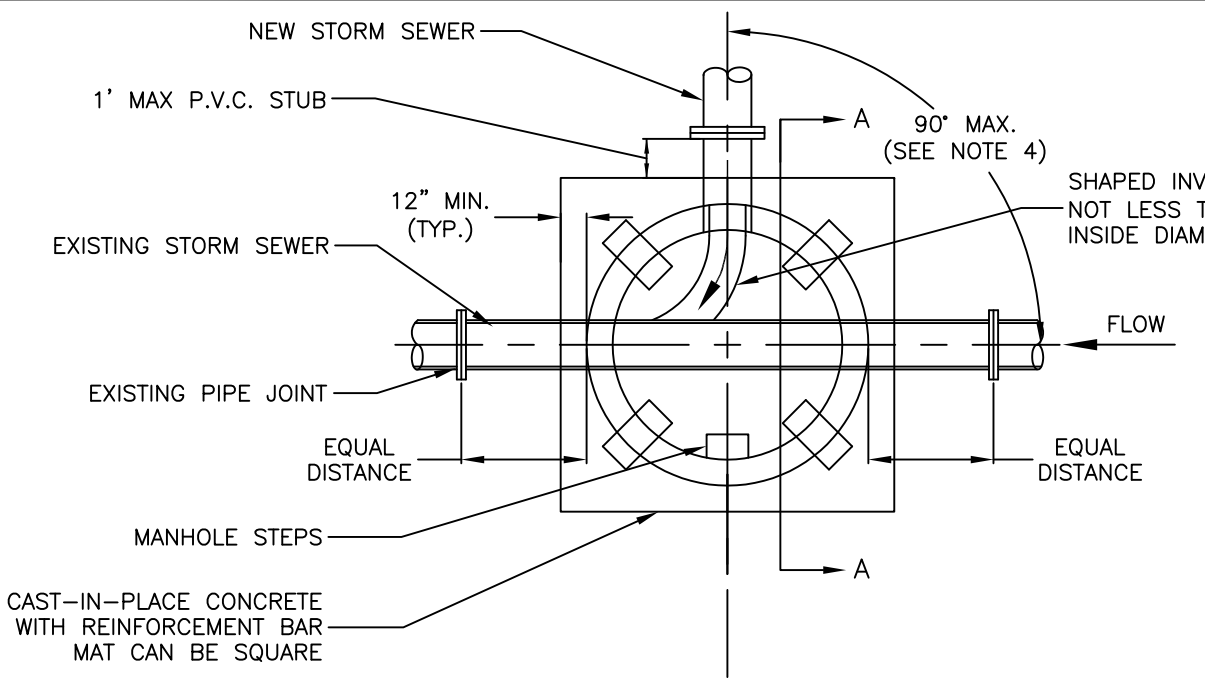
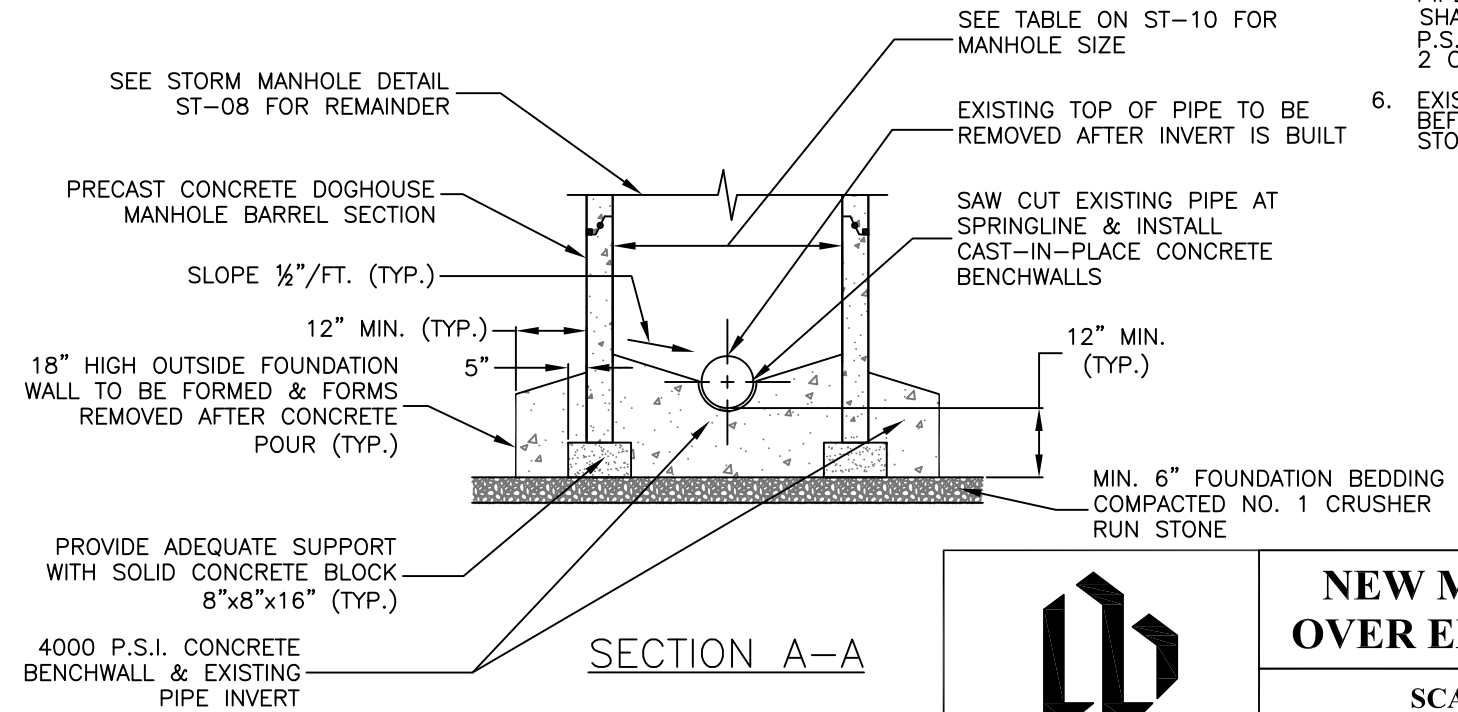


\\Oserver\user folders\Town Projects\AutoCAD Projects\Non-Town Wide\Details\Storm\ST-12\NewManholeExistSewer.dwg




PLAN VIEW



SECTION A-A

NOTES:

1. CONTRACTOR TO BUILD NEW MANHOLE EQUAL DISTANCE BETWEEN EXISTING PIPE JOINTS ON EXISTING STORM SEWER.
2. EXISTING PIPE SHALL BE THOROUGHLY CLEANED AND ADEQUATELY SUPPORTED PRIOR TO POURING CONCRETE FOR BASE.
3. REINFORCEMENT TO BE DETERMINED BY DESIGN CALCULATIONS AND SUBMITTED TO TOWN ENGINEERING DEPARTMENT FOR REVIEW. USE NO. 5 BARS, 12" O.C. EACH WAY MINIMUM.
4. PIPE ENTERING INTO STORM MANHOLE SHALL NOT EXCEED 90° ALIGNMENT AGAINST EXISTING STORM SEWER MAIN FLOW.
5. THE INTERIOR OF STORM MANHOLE BASE SECTION TO BE 12" MIN. ABOVE THE HIGHEST PIPE. THE SMOOTH INVERT AND BENCHWALL SHALL BE CAST-IN-PLACE CONCRETE (4000 P.S.I. MIN.). ALL OTHER SURFACES SHALL HAVE 2 COATS KOPPERS SUPER SERVICE BLACK.
6. EXISTING STORM SEWER SHALL BE TELEVIEWED BEFORE AND AFTER CONSTRUCTION OF NEW STORM MANHOLE.

|  |  |       |
|--|--|-------|
| <br>TOWN OF HENRIETTA | NEW MANHOLE CONSTRUCT<br>OVER EXISTING STORM SEWER |       |
|  | SCALE: N.T.S.                                      | ST-12 |
| DATE: 11/15/2011   |  |       |