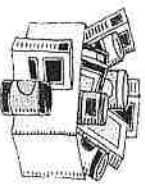


ABOUT RHAFT

The Rush-Henrietta Interfaith League, in 1979, formed a new mission – **RHAFT (Rush Henrietta Area Food Terminal)** – as an outgrowth of their F.I.S.H. (*Friends In Service Here*) mission. The Christian principle of “*love your neighbor as yourself*” and the Golden Rule of “*do unto others as you would have them do unto you,*” continued as guiding attitudes that supported expanding neighborly good turns into help providing food for the family.

A neighborhood association of volunteers committed to helping families in the Rush-Henrietta area – especially those including children – who qualify for emergency assistance based on circumstances and financial need, **RHAFT** works together to strengthen the community.

Beginning in a closet in St. Peter’s Episcopal Church, **RHAFT** then moved to the Gillette School, to Good Shepherd Church, and to the Webster School. In 2000, the community’s response to a \$65,000 Building Fund Drive made possible a much needed town building expansion with space dedicated for **RHAFT’s** own facility. Our valued partnership with Foodlink provided important support from the outset.



RHAFT AND OUR COMMUNITY

RHAFT, as the community’s emergency food cupboard for 36+ years, remains dedicated to assisting Rush-Henrietta families and individuals who need emergency help in providing nourishing food for their family. Being a **RHAFT** volunteer –

having direct contact with those in need and meeting those needs – will provide you with strong personal satisfaction and enrich your life for themselves.

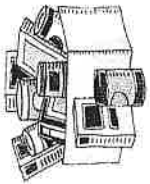
RHAFT relies on the generous donations of food and monies by churches, schools, businesses, civic and service groups, and individuals, including the support from community events like the Annual Crop Hunger Walk. Contributions from a very supportive community provide the necessary resources – grocery/personal care items, supplies and financial support – for the enduring operation of “Henrietta’s Food Cupboard.” For information on making **food or monetary donations** to **RHAFT**, call the Answering Service at 453-2370.

Families in need of food in an emergency can call 453-2370 for help (Mo-Fri).

AS A PACKER/DRIVER . . .

- ❖ You choose days and times (daytime hours, only) when you’d potentially be available for assignments.
 - ❖ Supplemental accident insurance, provided by **FISH / RHAFT, Inc.**, which covers you while delivering.
 - ❖ Training, including hands-on experience fulfilling a request, provided by a **RHAFT** Coordinator.
 - ❖ It’s your choice whether or not you want to be reimbursed for use of your own vehicle, on a per mile basis.
-
- ❖ Following a telephone interview to establish that the family “qualifies” for emergency assistance, the Verifier arranges for a **Packer/Driver**, from the monthly schedule, to make a delivery. You choose whether to accept an actual assignment, or not.
 - ❖ If assigned, drive to the **RHAFT** cupboard to pick/pack needed items for qualified family or individual. Follow a form to guide you on the kinds of food & supplies to choose for each delivery, which the Verifier will have personalized with items to avoid.
 - ❖ Drive to client’s home and deliver the box(es) and/or bag(s) you packed. A typical delivery can be completed in less than an hour, on average.
 - ❖ Call your Verifier, after completing each trip, to report your mileage & time, plus any concerns or unusual events that arose during the trip.
 - ❖ You submit a Monthly Mileage Report listing dates for all your deliveries each month, the family/individual helped, your mileage & time, and the Verifier who assigned you that trip. Your activity gets entered in a database for company statistics and required reporting.

(As a Packer/Driver cont’d)



YOUR PART

As a FISH / RHAFT, Inc. program focused on the distribution of emergency-food, RHAFT recruits new volunteers for one area: pick, pack and provide the emergency food and supplies response to qualified client requests. Volunteers donate a few hours each month to complete the pantry cycle – “Shelf to Table” – for feeding hungry individuals of all ages.

RHAFT continues to fill an area of service that is necessary for a healthier community, including special projects—School Supplies (AUG/SEP) & Holiday Baskets (NOV/DEC). The more volunteers available, the greater the service we can render.

Would you like to put a sparkle in your day and feel good about how you are spending your time? Being a RHAFT volunteer will provide you with strong personal satisfaction and enrich your life.

GET INVOLVED

VOLUNTEER WITH RHAFT

CALL 453-2370 TODAY!!

Tell the Answering Service that you would like to help out. You will be called back by a volunteer who can answer your questions and put your service to good use.

Volunteers who extend a helping hand are the heart of our community!

You'll get a lot more from it than you expect . . .
... frequently even more than you give.

RHAFT . . .

Serves residents living within the Rush-Henrietta Central School District borders.

RHAFT is a mission of the Rush-Henrietta Interfaith League; a program of Community Concerns of Henrietta, Inc., the Henrietta Chamber of Commerce and R-H Rotary; and a member of FOODLINK'S Monroe County network of Emergency Food Providers.

FISH / RHAFT, Inc. is an all-volunteer, not-for-profit, 501(c)3 charitable organization.

R-H INTERFAITH LEAGUE (RHIL) MEMBER CONGREGATIONS

Christian Friendship Missionary
Baptist Church

Faith United Methodist Church

Henrietta United Church of Christ

John Calvin Presbyterian Church

Rush United Methodist Church

St. Marianne Cope Roman Catholic Parish:

Church of the Good Shepherd

Guardian Angels Church

St. Joseph's Church

St. Mark Lutheran Church

St. Peter's Episcopal Church

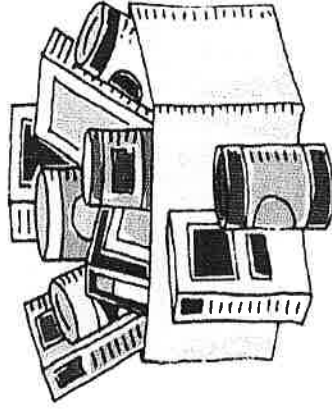
Temple Beth Am Congregation

West Henrietta Baptist Church

FISH / RHAFT, Inc.

Neighorly Helping Hands
for A Healthier Community

Feel Good About Your Day ...



HELP US HELP OTHERS!

RHAFT (R-H Area Food Terminal)
P.O. Box 302 ♦ Henrietta, New York 14467

585 / 453-2370

www.fishrhaftinc.org