

DAKOTA PARTNERS, INC.
235 BEAR HILL ROAD
WALTHAM, MA, 02451

PASSERO ASSOCIATES
1000 WEST MAIN STREET
WALTHAM, MA 02451
Tel: 978.232.1001
Fax: 978.232.1001
Project in Charge: Ben Seale, PE
Project Manager: David Cole, PE
Designed by: Joshua Seaton, EIT

Revisions	
No.	Description
1	

NORTH SOUTH SECTION VIEW

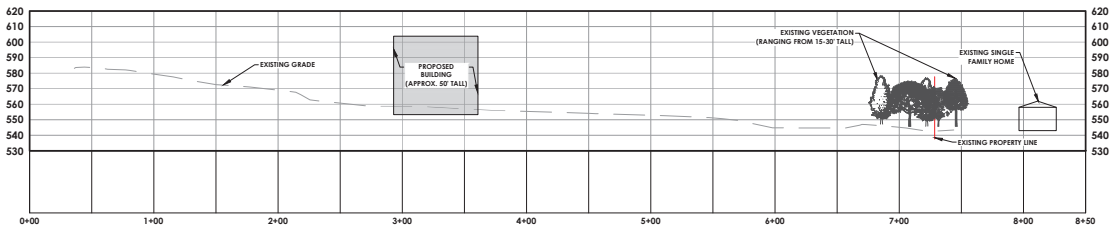
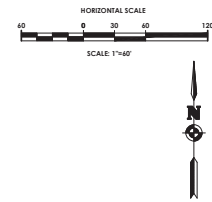
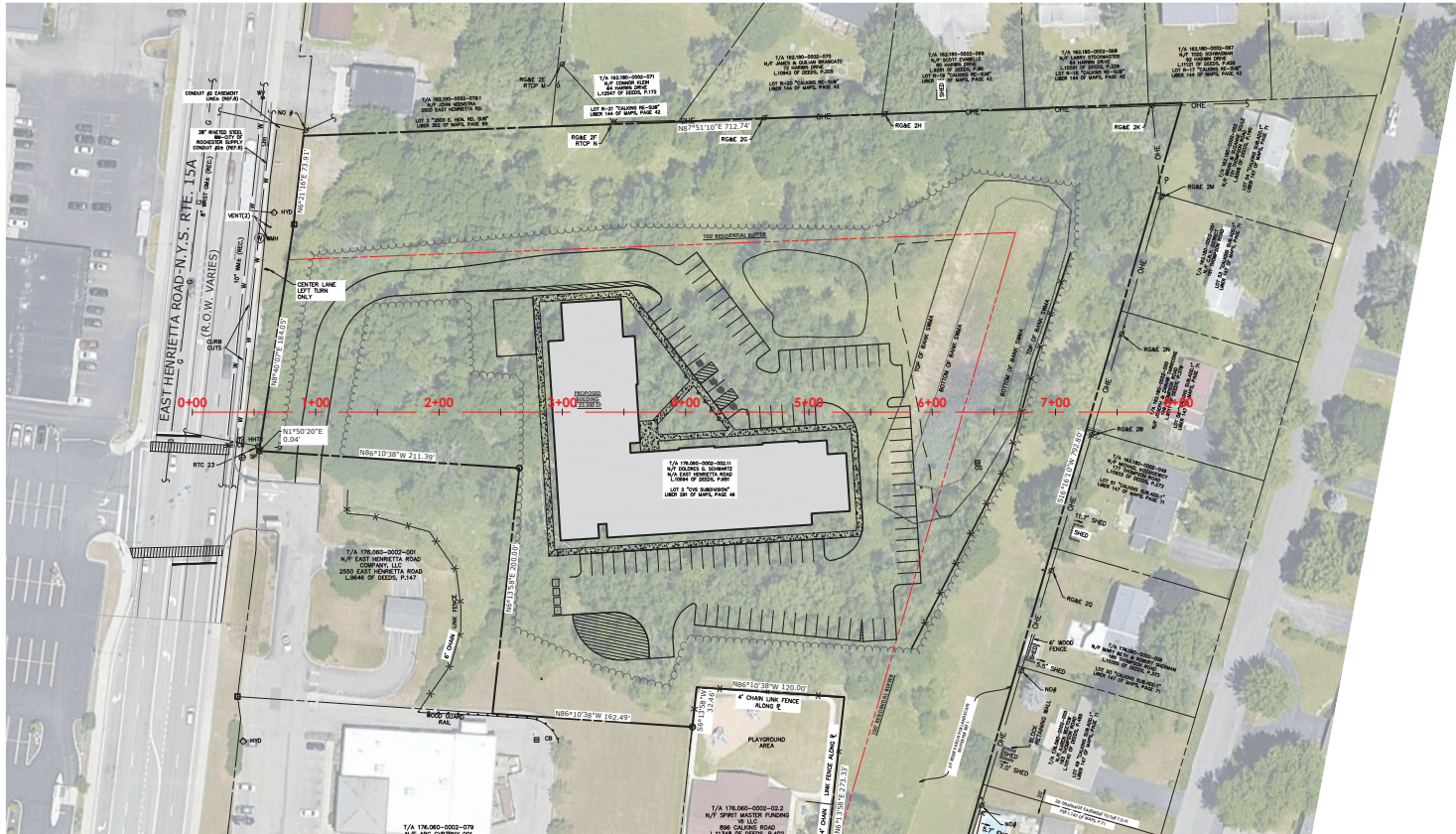
SOUTHTRIDGE LANDING

County: MIDDLEBURY State: New York
Project No.: 20223310.0001
Drawing No.: C 101 Sheet No.: 1

Scale: 1" = 20'
DATE: APRIL 2022

NOT FOR CONSTRUCTION

© 2022 PASSERO ASSOCIATES, INC. ALL RIGHTS RESERVED. THIS DOCUMENT IS THE PROPERTY OF PASSERO ASSOCIATES, INC. AND IS NOT TO BE REPRODUCED OR TRANSMITTED IN ANY FORM OR BY ANY MEANS, ELECTRONIC OR MECHANICAL, INCLUDING PHOTOCOPYING, RECORDING, OR BY ANY INFORMATION STORAGE AND RETRIEVAL SYSTEM.



EAST-WEST SECTION VIEW PROFILE
 SCALE: HORIZONTAL - 1" = 50'
 VERTICAL - 1" = 25'