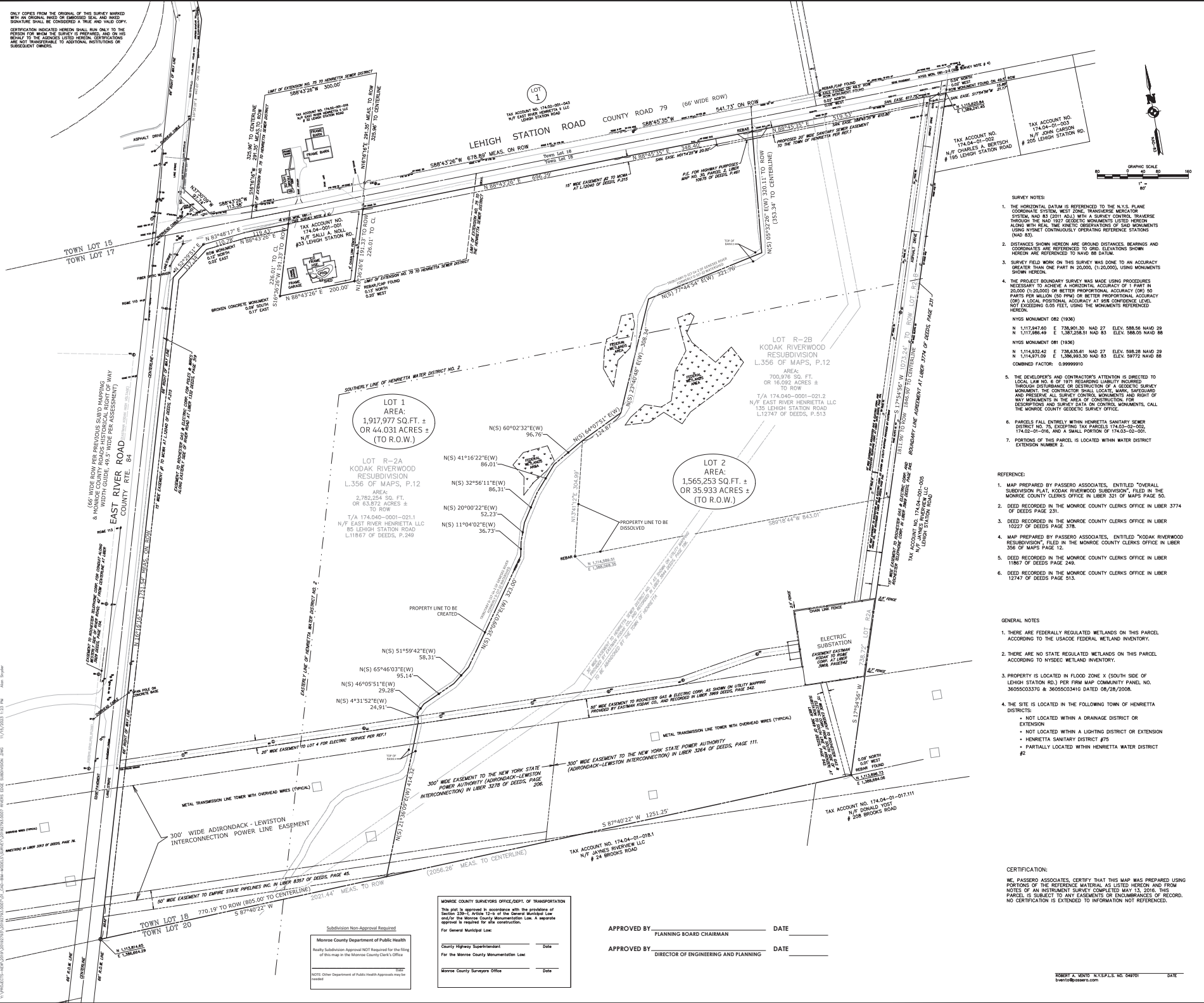
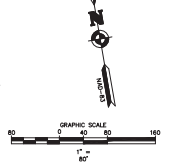




ONLY COPIES FROM THE ORIGINAL OF THIS SURVEY MARKED WITH AN ORIGINAL REDD OR EMBOSSING SEAL AND REED SIGNATURE SHALL BE CONSIDERED A TRUE AND VALID COPY. CERTIFICATION INDICATED HEREON SHALL RUN ONLY TO THE PERSON FOR WHOM THE SERVICE IS PERFORMED, AND ON THIS REGARD TO THE ASSOCIATES LISTED HEREON. CERTIFICATIONS ARE NOT TRANSFERABLE TO ADDITIONAL INSTITUTIONS OR SUBSEQUENT OWNERS.

SYMBOL	MEASUREMENT	REMARKS
---	BOUNDARY	
---	EXIST. CURB AND FENCE	
---	EXIST. DRIVE	
---	EXIST. SIDE OF FENCE	
---	EXIST. MEASUREMENT	
---	EXIST. SIDE OF WAY	
---	EXIST. STORAGE FENCE	

SYMBOL	LEGEND
---	EXIST. DRIVE
---	EXIST. CLEANOUT DRAINAGE SENDER
---	EXIST. CLEANOUT SANITARY SENDER
---	EXIST. END SECTION DRAINAGE PIPE
---	EXIST. GAS VALVE
---	EXIST. HYDRANT
---	EXIST. MANHOLE (DRAINAGE TYPE)
---	EXIST. MANHOLE (ELECTRIC)
---	EXIST. MANHOLE DRAINAGE SENDER
---	EXIST. MANHOLE SANITARY SENDER
---	EXIST. SIGN POST (ELECTRIC)
---	EXIST. TREE CONTOUR
---	EXIST. UTILITY LIGHT SPAN POLE
---	EXIST. UTILITY POLE
---	EXIST. UTILITY POLE ANCHOR BASE
---	EXIST. UTILITY POLE WITH LIGHT
---	EXIST. WATER SERVICE
---	EXIST. WATER VALVE



- SURVEY NOTES**
- THE HORIZONTAL DATUM IS REFERENCED TO THE N.Y.S. PLANE COORDINATE SYSTEM, WEST ZONE, TRANSVERSE MERCATOR SYSTEM, HAS 82,001 ADJUSTED WITH A SURVEY CONTROL TRAVERSE THROUGH THE NAD 1927 GEODETIC MONUMENTS LISTED HEREON ALONG WITH REAL-TIME KINETIC OPERATIONS OF SAID MONUMENTS USING HYDNET CONTINUOUSLY OPERATING REFERENCE STATIONS (CHD 83).
  - DISTANCES SHOWN HEREON ARE GROUND DISTANCES, BEARINGS AND 1000MM AREAS ARE REFERENCED TO 000. ELEVATIONS SHOWN HEREON ARE REFERENCED TO NAVD 88 DATUM.
  - SURVEY FIELD WORK ON THIS SURVEY WAS DONE TO AN ACCURACY GREATER THAN ONE PART IN 20,000, (1:20,000), USING MONUMENTS SHOWN HEREON.
  - THE PROJECT BOUNDARY SURVEY WAS MADE USING PROCEDURES NECESSARY TO ACHIEVE A HORIZONTAL ACCURACY OF 1 PART IN 20,000 (1:20,000) OR BETTER PROPORTIONAL ACCURACY (PM) 50 PARTS PER MILLION (PPM) OR BETTER PROPORTIONAL ACCURACY (CP) A LOCAL POSITIONAL ACCURACY AT 95% CONFIDENCE LEVEL NOT EXCEEDING 0.06 FEET, USING THE MONUMENTS REFERENCED HEREON.
- NYSS MONUMENT 082 (1936)  
 N 1,117,847.60 E 736,901.30 NAD 27 ELEV. 588.56 NAVD 88  
 N 1,117,886.49 E 1,387,258.51 NAD 83 ELEV. 588.05 NAVD 88  
 NYSS MONUMENT 081 (1936)  
 N 1,114,332.42 E 736,838.61 NAD 27 ELEV. 588.28 NAVD 88  
 N 1,143,617.09 E 1,386,993.30 NAD 83 ELEV. 597.72 NAVD 88  
 COMBINED FACTOR: 0.99999910
- THE DEVELOPER'S AND CONTRACTOR'S ATTENTION IS DIRECTED TO LOCAL LAW NO. 8 OF 1971 RESEMBLING LIABILITY INSURANCE THROUGH DISTURBANCE OR DESTRUCTION OF A GEODETIC SURVEY MONUMENTS SHALL LOCATE, MARK, SADDLEPOINT AND PRESERVE ALL SURVEY CONTROL MONUMENTS AND RIGHT OF WAY MONUMENTS IN THE AREA OF CONSTRUCTION FOR DESCRIPTIONS AND SURVEY DATA ON CONTROL MONUMENTS, CALL THE MONROE COUNTY GEODETIC SURVEY OFFICE.
  - PARCELS FALL ENTIRELY WITHIN HENRIETTA SANITARY DISTRICT NO. 76, EXCEPTING TAX PARCELS 174,040-001-002, 174,040-001-003, AND A SMALL PORTION OF 174,040-001-001.
  - PORTIONS OF THIS PARCEL IS LOCATED WITHIN WATER DISTRICT EXTENSION NUMBER 2.

- REFERENCE:**
- MAP PREPARED BY PASSERO ASSOCIATES, ENTITLED "OVERALL SUBDIVISION PLAN, KODAK RIVERWOOD SUBDIVISION", FILED IN THE MONROE COUNTY CLERK'S OFFICE IN LIBER 321 OF MAPS PAGE 50.
  - DEED RECORDED IN THE MONROE COUNTY CLERK'S OFFICE IN LIBER 3774 OF DEEDS PAGE 231.
  - DEED RECORDED IN THE MONROE COUNTY CLERK'S OFFICE IN LIBER 10227 OF DEEDS PAGE 378.
  - MAP PREPARED BY PASSERO ASSOCIATES, ENTITLED "KODAK RIVERWOOD RESUBDIVISION", FILED IN THE MONROE COUNTY CLERK'S OFFICE IN LIBER 356 OF MAPS PAGE 12.
  - DEED RECORDED IN THE MONROE COUNTY CLERK'S OFFICE IN LIBER 11887 OF DEEDS PAGE 249.
  - DEED RECORDED IN THE MONROE COUNTY CLERK'S OFFICE IN LIBER 12747 OF DEEDS PAGE 513.

- GENERAL NOTES**
- THERE ARE FEDERALLY REGULATED WETLANDS ON THIS PARCEL ACCORDING TO THE USACE FEDERAL WETLAND INVENTORY.
  - THERE ARE NO STATE REGULATED WETLANDS ON THIS PARCEL ACCORDING TO NYSDEC WETLAND INVENTORY.
  - PROPERTY IS LOCATED IN FLOOD ZONE X (SOUTH SIDE OF LEHIGH STATION RD.) PER FIRM MAP COMMUNITY PANEL NO. 3605503370 & 3605503341G DATED 08/28/2008.
  - THE SITE IS LOCATED IN THE FOLLOWING TOWN OF HENRIETTA DISTRICTS:
    - NOT LOCATED WITHIN A DRAINAGE DISTRICT OR EXTENSION
    - NOT LOCATED WITHIN A LIGHTING DISTRICT OR EXTENSION
    - HENRIETTA SANITARY DISTRICT #75
    - PARTIALLY LOCATED WITHIN HENRIETTA WATER DISTRICT #2

**CERTIFICATION:**

WE, PASSERO ASSOCIATES, CERTIFY THAT THIS MAP WAS PREPARED USING PORTIONS OF THE REFERENCE MATERIAL AS LISTED HEREON AND FROM NOTES OF AN INSTRUMENT SURVEY COMPLETED MAY 13, 2016. THIS PARCEL IS SUBJECT TO ANY EASEMENTS OR ENCUMBRANCES OF RECORD. NO CERTIFICATION IS EXTENDED TO INFORMATION NOT REFERENCED.

APPROVED BY \_\_\_\_\_ DATE \_\_\_\_\_  
 PLANNING BOARD CHAIRMAN

APPROVED BY \_\_\_\_\_ DATE \_\_\_\_\_  
 DIRECTOR OF ENGINEERING AND PLANNING

MONROE COUNTY SURVEYORS OFFICE/DEPT. OF TRANSPORTATION  
 This plan is approved in accordance with the provisions of Section 230 of Article 23 of the General Municipal Law and/or the General County Administration Law. A separate approval is required for site construction.

For General Municipal Use:  
 County Highway Superintendent \_\_\_\_\_ Date \_\_\_\_\_  
 For the Monroe County Monumentation List:  
 Monroe County Surveyors Office \_\_\_\_\_ Date \_\_\_\_\_

Subdivision Non-Approval Required  
 Monroe County Department of Public Health  
 Ready Subdivision Approval NOT Required for the filing of this map in the Monroe County Clerk's Office.

NOTE: Other Department of Public Health Approvals may be needed.

Revisions

No.	Date	Description



**Passero Associates**  
 1211 West Henrietta Road, Suite 100  
 Henrietta, NY 14620  
 Phone: 585-382-8888  
 Fax: 585-382-8889  
 Email: info@passero.com  
 Project Manager: Robert A. Vento, PLS  
 Draftsman: Alan J. Snyder, PLS

Client:  
 East River Henrietta, LLC  
 64 Commercial Street, Suite 401  
 Rochester, NY 14614

**RIVERS EDGE SUBDIVISION**  
 Being a Resubdivision of Lot R-2A and R-2B of the Kodak Riverwood Resubdivision Filed in Liber 356 of Maps Page 12

Being Part of Town Lot 18, On Range of Lots, Township 12, Range 7, Plaza & Gordon Purchase, Town of Henrietta, County of Monroe, State of N.Y.

Project No:  
**20192793.0007**

Drawing No. \_\_\_\_\_  
 Sheet No. **S-100** of **1 of 1**

Scale:  
**1" = 80'**

DATE  
**NOVEMBER 2023**