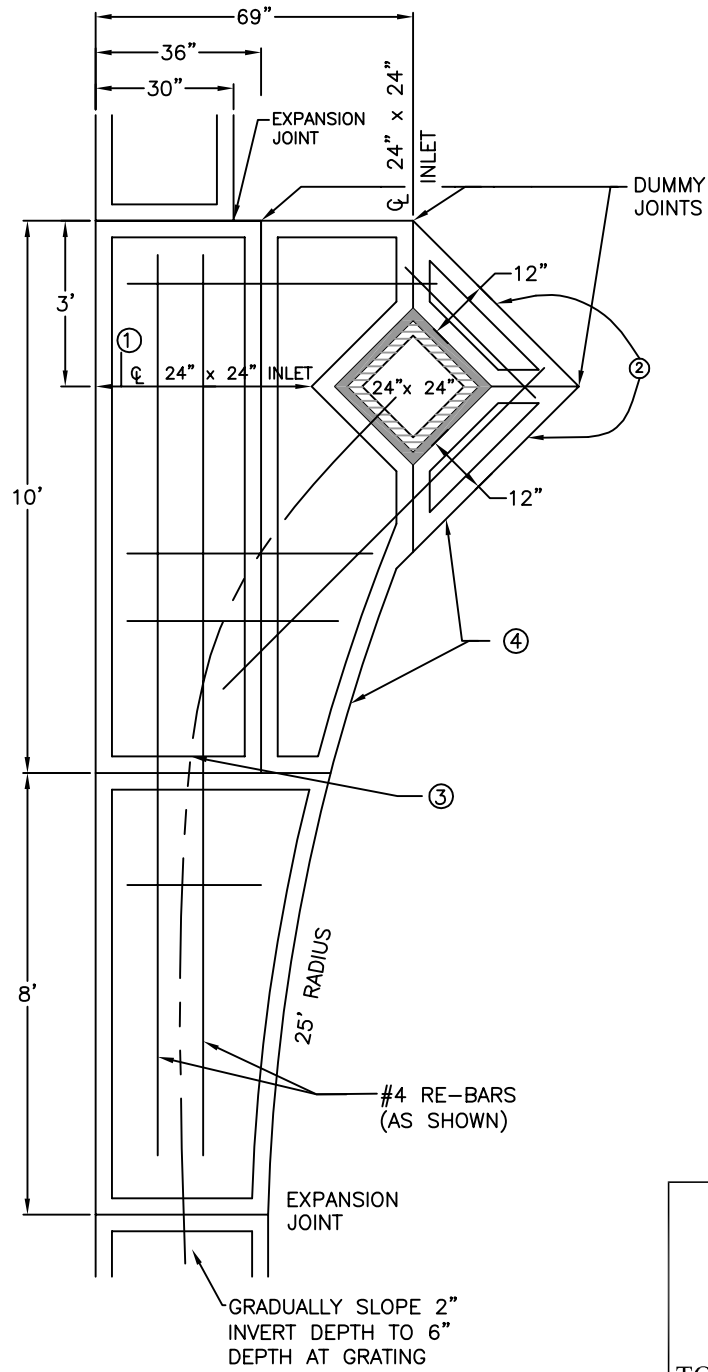


TO BE USED ON SLOPES OF 6.0% OR MORE



SPRAY WITH ACUSEAL, POLYCLEAR OR APPROVED EQUAL PER SPEC. 400-6.

CONCRETE TO BE 4000 PSI MIN. FOR SPECIAL INLET APRON.

PROVIDE #9 CATCH BASIN FRAME & GRATE RECTANGULAR PER SYRACUSE CASTING OR APPROVED EQUAL.

- ① 6-10" DROP FROM EDGE OF PAVEMENT TO TOP OF GRATE AT THIS POINT
- ② BACK EDGE 3'-6" ABOVE GRATE. UNIFORM SLOPE DOWN TO GRATE
- ③ 3" DROP FROM EDGE OF PAVEMENT TO INVERT AT THIS POINT
- ④ SLOPE FROM 1" ABOVE PAVEMENT TO 3'-6" ABOVE GRATE



TOWN OF HENRIETTA

SPECIAL INLET APRON

SCALE: N.T.S.

DATE: 03/14/2012

RD-11