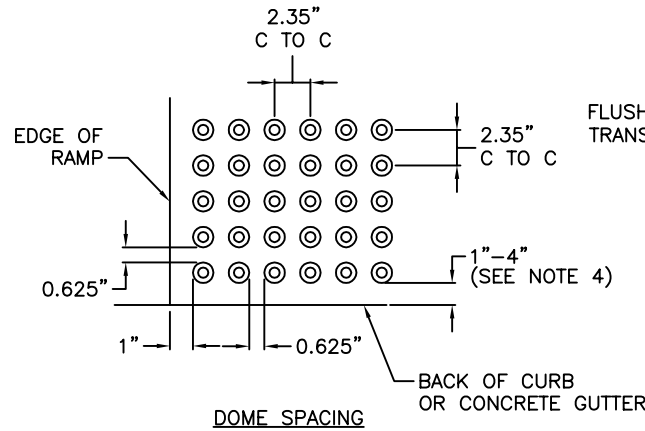
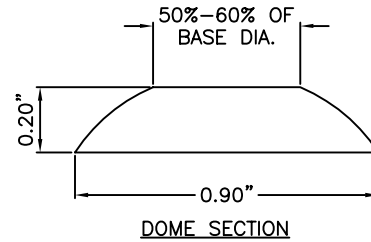


\\0server\user folders\Town Projects\AutocAD Projects\Non-Town Wide\Details\Roadway\RD-14\SidewalkCurbRamp.dwg

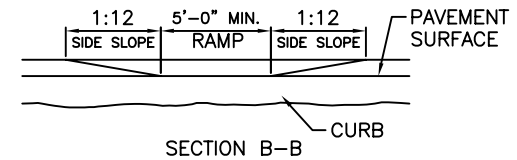
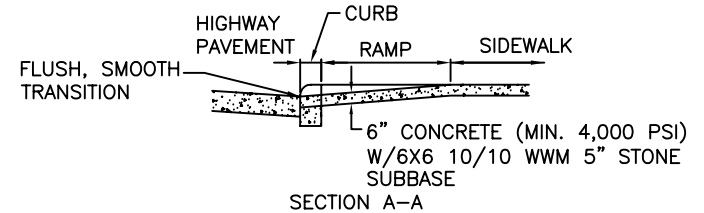
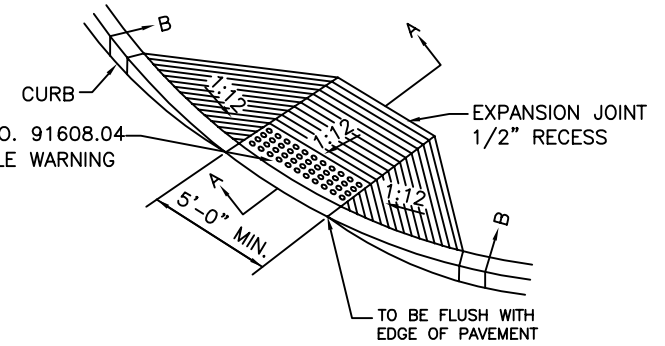
NOTES:

1. QUANTITY OF TRUNCATED DOMES SHOWN IS FOR ILLUSTRATIVE PURPOSES ONLY AND TO DEPICT REQUIRED SQUARE GRID PATTERN.
2. TRUNCATED DOMES ARE TO BE ALIGNED ON THE SQUARE GRID PATTERN IN THE PREDOMINANT DIRECTION OF TRAVEL.
3. ENTIRE DETECTABLE WARNING SYSTEM FIELD, INCLUDING TRUNCATED DOMES, IS TO BE DARK GRAY IN COLOR, PER MUNSELL BOOK NOTATION BG-PB 3/5, OR APPROVED EQUIVALENT.
4. OUTER EDGE OF THE DETECTABLE WARNING SYSTEM FIELD IS TO BE LOCATED SO THAT THE EDGE OF THE WARNING FIELD NEAREST TO THE STREET IS 1" TO 4" BEHIND THE BACK EDGE OF THE CURB OR CONCRETE GUTTER SECTION.
5. DETECTABLE WARNING SYSTEM IS TO EXTEND ACROSS THE FULL WIDTH OF A SIDEWALK ACCESS RAMP, BUT NOT UP THE SIDE FLARES.
6. RAISED TRUNCATED DOMES SHALL BE CONSTRUCTED BY PRE-CAST TILES SET INTO SIDEWALK.
7. RAISED TRUNCATED DOMES SHALL BE PER NYSDOT SPECIFICATIONS SECTION 608.



DETECTABLE WARNING SYSTEM
N.T.S.

NYSDOT ITEM NO. 91608.04
(SEE DETECTABLE WARNING SYSTEM DETAIL)



SIDEWALK CURB RAMP
N.T.S.



TOWN OF HENRIETTA

SIDEWALK CURB RAMP

SCALE: N.T.S.

DATE: 03/14/2012

RD-14