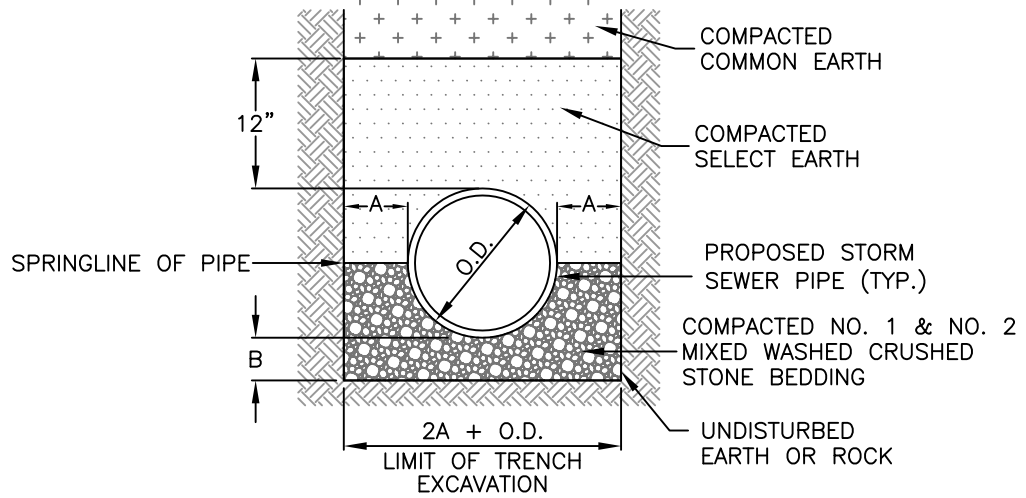
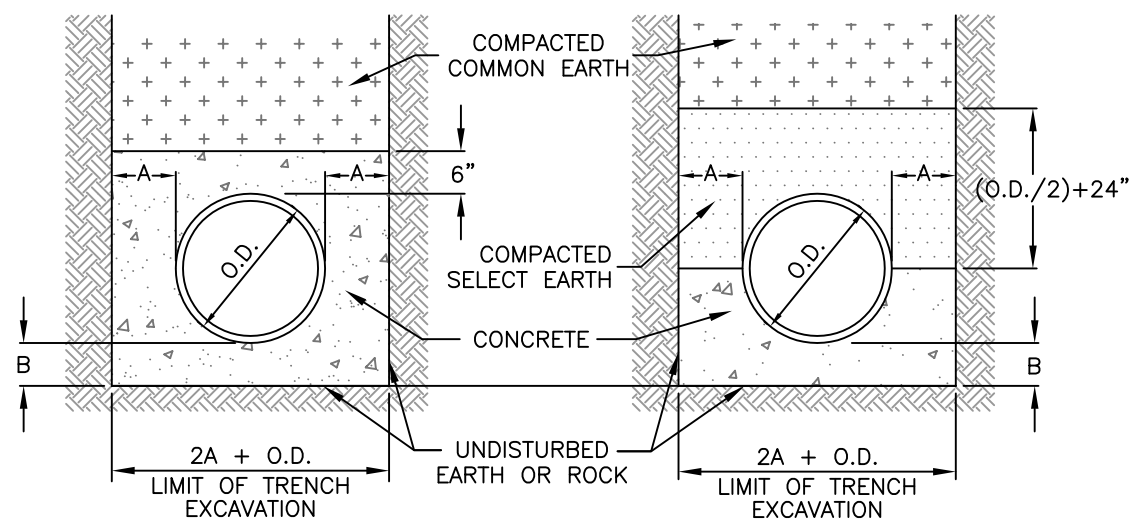


\\0server\user folders\Town Projects\AutoCAD Projects\Non-Town Wide\Details\Storm\ST-01\PipeBedding.dwg



TYPICAL STORM BEDDING DETAIL



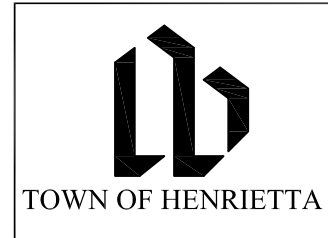
CONCRETE ENCASEMENT

CONCRETE CRADLE

PIPE DIA.	A	B
UP TO 18"	12"	6"
21" TO 36"	18"	9"
OVER 36"	24"	12"

NOTES:

1. ALL STORM SEWER PIPE SHALL BE 12" MINIMUM PIPE DIAMETER, POLYVINYL CHLORIDE PIPE (PVC SDR-35) OR HEAVY DUTY CORRUGATED POLY-ETHYLENE (PE) SMOOTH INNER WALL TYPE D BELL & SPIGOT TYPE & RUBBER GASKET.
2. ALL STORM LATERAL PIPE SHALL BE 4" MINIMUM PIPE DIAMETER, POLYVINYL CHLORIDE PIPE (PVC SDR-21), BELL & SPIGOT TYPE & RUBBER GASKET OR SCHEDULE 40.
3. SELECT EARTH SHALL BE SAND GRAVEL AND SIMILAR MATERIAL WHICH SHALL BE FREE FROM CLAY, LOAM, ORGANIC MATERIAL, DEBRIS, FROZEN MATERIAL AND SHALL CONTAIN ONLY SMALL AMOUNTS OF STONE, PEBBLES OR LUMPS OVER ONE INCH IN GREATEST DIMENSION BUT NONE OVER TWO INCHES IN GREATEST DIMENSIONS.
4. STONE ENCASEMENT SHALL MEAN APPROVED IMPORTED AGGREGATE MEETING THE REQUIREMENTS OF THE NYSDOT, STANDARD SPECIFICATION, MAY 1, 2008 EDITION PAGES 7-14, SUBSECTION 703-0201 "CRUSHED STONE". PRIMARY SIZE OR A MIXTURE OF PRIMARY SIZES 1 AND 2.
5. CONCRETE SHALL BE CAST-IN-PLACE CLASS "A" MEETING NYSDOT SECTION 501 SPECIFICATIONS.



**TYPICAL STORM PIPE BEDDING DETAILS**

SCALE: N.T.S.  
DATE: 11/15/2011

**ST-01**