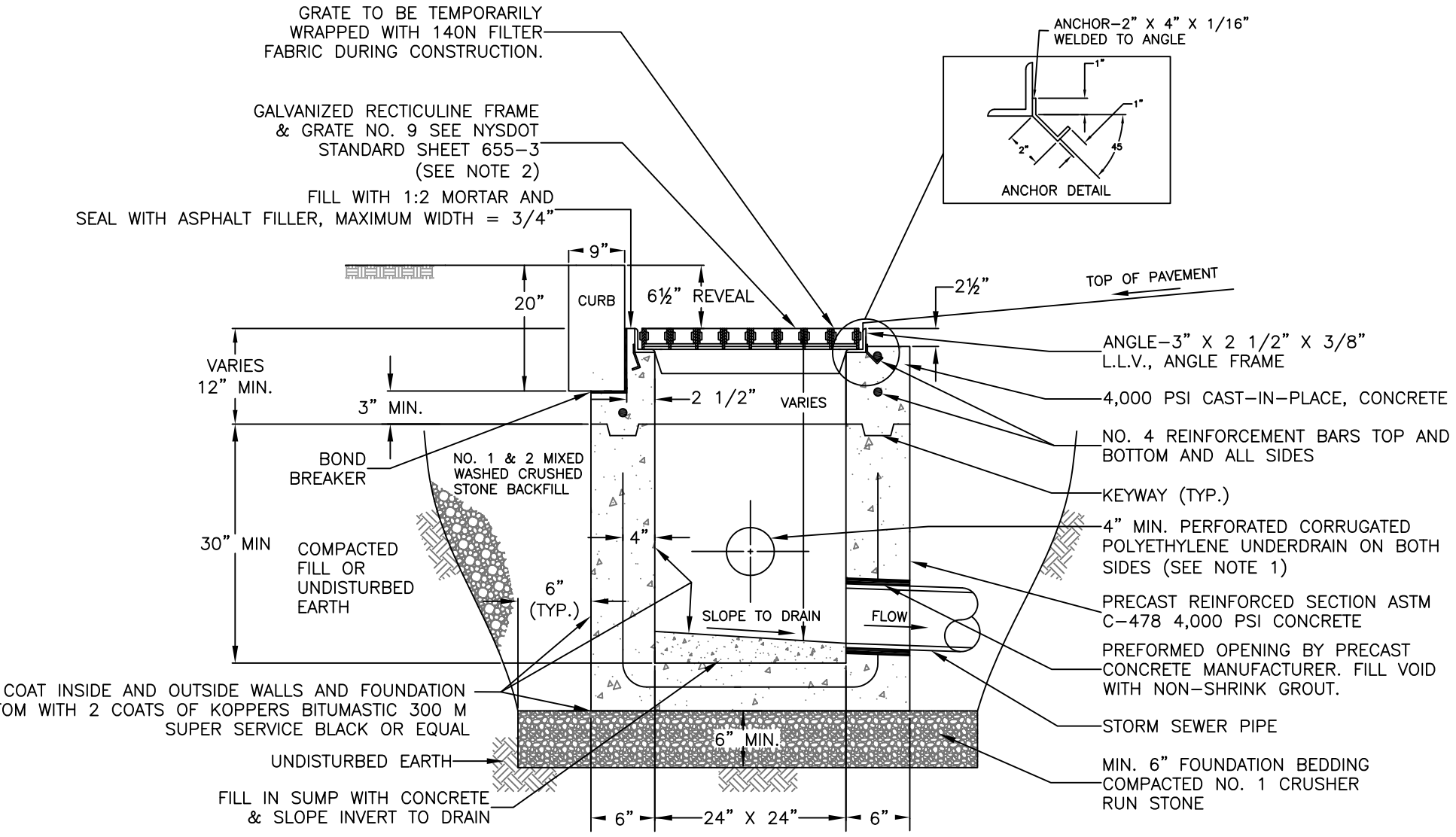
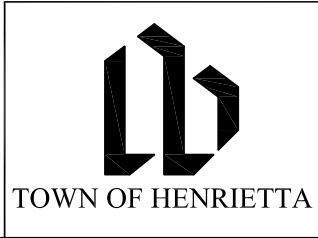


\\0server\user folders\Town Projects\AutoCAD Projects\Non-Town Wide\Details\Storm\ST-14\CatchBasinCurbing.dwg



NOTES:

1. ROADWAY UNDERDRAIN PIPE SHALL ONLY BE PLUGGED ON DOWNSTREAM SIDE OF CATCH BASIN, BUT NOT IN LOW POINT CATCH BASINS.
2. THE MAIN SUPPORT BARS ON THE RETICULINE GRATE SHALL BE PARALLEL TO THE ROADWAY WITH SECURING BOLTS PERPENDICULAR TO THE ROADWAY.
3. UPON COMPLETION & ACCEPTANCE OF CATCH BASIN, THE GRATE SHALL BE BOLTED DOWN FOR PUBLIC SAFETY.



| | |
|------------------------------|--------------|
| CATCH BASIN - CURBING | |
| SCALE: N.T.S. | ST-14 |
| DATE: 11/15/2011 | |