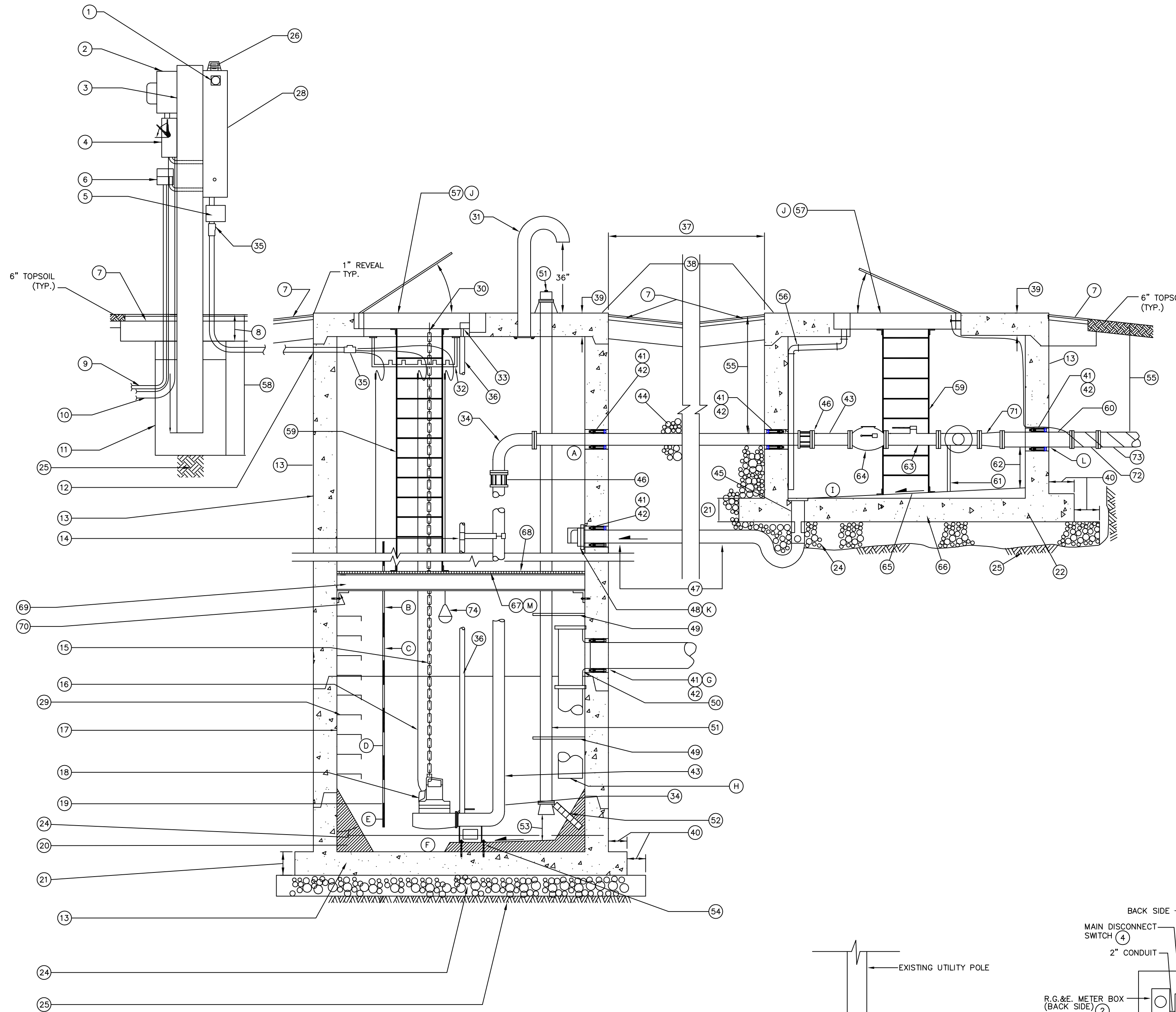


**PUMP STATION LEGEND**

- 1 KLAXON HORN (HORN SHALL BE OPERATED BY A BATTERY WITH CHARGER SHOULD THERE BE A POWER FAILURE) (EXTERNAL SILENCE BUTON NEAR BOTTOM OF CABINET) TIMER FOR HORN SHALL ALSO BE PROVIDED.
- 2 ELECTRIC METER CABINET
- 3 2 - 4" STEEL CHANNELS (PRIME AND FINISH WITH 2 COATS OF MATTE GREY RUST PROOF PAINT) 3/8" DIA. GALVANIZED HEX HEAD BOLTS, NUTS AND WASHERS TO BE UTILIZED FOR ALL CONNECTIONS, WHERE POSSIBLE.
- 4 ELECTRIC MAIN DISCONNECT SWITCH WITH LOCKING HANDLE
- 5 ELECTRICAL JUNCTION BOX
- 6 TELEPHONE JUNCTION BOX
- 7 FINISHED PAVEMENT GRADE ASPHALT  
1" N.Y.S.D.O.T. TYPE 7 TOP, ITEM NO. 403.18  
3" N.Y.S.D.O.T. TYPE 3 BINDER, ITEM NO. 403.13  
12" N.Y.S.D.O.T. TYPE 2 SUBBASE, ITEM NO. 304.03
- 8 6" MIN. (TYP.)
- 9 1"Ø CONDUIT TO TELEPHONE SOURCE
- 10 2"Ø CONDUIT TO ELECTRIC POWER SUPPLY
- 11 CONCRETE 3500 PSI 6" MIN. (ALL SIDES)
- 12 CONDUIT TO CONTROL BOX - PROVIDE THREE (3) 3"Ø CONDUITS
- 13 8" DIA. PRECAST REINFORCED CONCRETE MANHOLE RISERS, FLAT SLAB COVER AND BASE ASTM C-478 WITH ROUND RUBBER GASKET JOINTS ASTM C-443/APPLY FLEXIBLE JOINT SEALER TO JOINTS) INTERIOR AND EXTERIOR TO BE COATED WITH 2 COATS KOPPERS BITUMASTIC SUPER SERVICE BLACK OR APPROVED EQUAL.
- 14 INTERMEDIATE GUIDE BAR BRACKET STAINLESS STEEL (USED FOR GUIDE BARS OVER 20 FT. LONG)
- 15 LIFTING CHAIN WITH SHACKLES - STAINLESS STEEL
- 16 PUMP POWER CABLE
- 17 EPOXY COATING, SIKAGARD 62 (SIKA CORP.) FACTORY APPLIED FROM BOTTOM UP TO HWL ALARM ELEVATION
- 18 DUPLEX SUBMERSIBLE SEWAGE PUMPS FLYGT, MODEL \_\_\_\_\_ 4" DISCHARGE IMPELLER NO. \_\_\_\_\_ HP \_\_\_\_\_ AMPS, 230 VOLTS INCLUDING ONE (1) MIX-FLUSH VALVE MODEL 4901
- 19 LIQUID LEVEL SENSING PROBE & DUPLEX CONTROLLER TYPE MT2PC AS MANUFACTURED BY MULTITRODE OR APPROVED EQUAL.
- 20 4000 PSI CONCRETE FILLET (PLACE WHERE PRACTICAL AROUND BOTTOM TO AVOID PIPING, CONTROLS, ETC. (SEE MANUFACTURERS SPECIFICATIONS)
- 21 8" MIN.
- 22 8" DIAMETER PRECAST CONCRETE BASE WITH BARREL WALL SECTIONS
- 23 60"
- 24 9" MIN. THICK N.Y.S.D.O.T. COMPACTED NO. 2 CRUSHER RUN STONE
- 25 UNDISTURBED EARTH
- 26 FLASHING ALARM LIGHT WITH METAL GUARD
- 27 EMERGENCY GENERATOR PLUG SHALL BE PROVIDED TO ALLOW CONNECTION OF PORTABLE GENERATOR. THE PLUG AND SWITCH SHALL BE CROUSE HINDS RECEPTACLE NO. AR 1041-S22 4 WIRE - 4 POLE (MALE) (3 PHASE) OR APPROVED EQUAL.
- 28 NEMA 3R WATERTIGHT ENCLOSURE WITH DRIP SHIELD AND OUTER DOOR WINDOW PAINTED 2 COATS BATTLESHIP GREY. DOOR OPENS TO THE LEFT & FACING EAST AS MANUFACTURED BY FLYGT CORP. OR APPROVED EQUAL.
- 29 COPOLYMER POLYPROPYLENE PLASTIC STEPS (STEPS 12" O.C.)
- 30 SAFETY CHAIN HOOK - STAINLESS STEEL
- 31 4" STEEL VENT PIPE WITH BIRD SCREEN AND FINISH PAINT WITH 2 COATS BATTLESHIP GREY RUST PROOF PAINT (BOLTED TO BOTTOM OF TOP SLAB)
- 32 STRAIN RELIEF CABLE BAR TO BE BOLTED TO WET WELL TOP SLAB (ALL STAINLESS STEEL).
- 33 UPPER GUIDE BAR BRACKET (STAINLESS STEEL).
- 34 4" FLANGED DUCTILE IRON (D.I.) CLASS 52 ELBOW
- 35 GAS SEAL OFF
- 36 GUIDE BARS - 2" DIA. STANDARD STAINLESS STEEL PIPE
- 37 5' MIN. CLEARANCE
- 38 PRECAST REINFORCED CONCRETE FLAT SLAB
- 39 8" MIN.
- 40 6" MIN.
- 41 ALL PIPE OPENINGS THROUGH PUMP STATION AND VALVE PIT WALLS SHALL BE LINK SEAL JOINTS. PIPE OPENINGS SHALL BE 12" MIN. FROM MANHOLE JOINTS
- 42 LINK SEAL
- 43 4" DISCHARGE PIPING (D.I.P. CL 52 FLANGE JOINT PIPE AND FITTINGS)
- 44 THIS PIPE ONLY - PLAIN END/FLANGED END. SECTION ENCASED WITH NO. 1 AND NO. 2 CRUSHED STONE

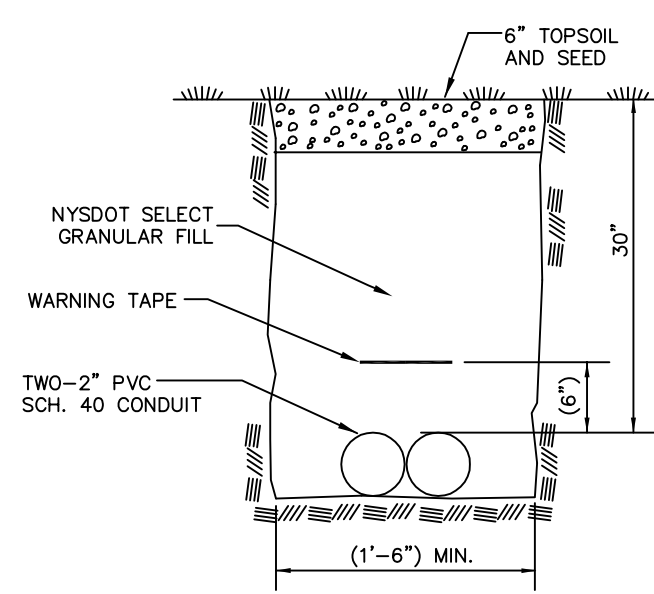
- 45 4" FLOOR DRAIN, "P" TRAP AND INTEGRAL BALL CHECK VALVE
- 46 4" FLANGED D.I. ADAPTOR DRESSER STYLE 127 OR APPROVED EQUAL
- 47 4" DRAIN PIPE (D.I.P. CL 52) SLOPED TO WET WELL ENCASED WITH NO. 1 & NO. 2 CRUSHED STONE
- 48 4" FLANGED FLAP VALVE WITH BRONZE SEAT
- 49 PIPE SUPPORTS AND ANCHOR BOLTS (ALL STAINLESS STEEL)
- 50 INFLUENT PIPE TEE TURNED DOWN, TYP., ANCHORED TO WALL (SEE TABLE OF INVERTS).
- 51 3" SUCTION HOSE PIPING (D.I.P. CL 52 FLANGED JOINT PIPE AND FITTINGS) PROVIDE PIPE SUPPORTS WITH STAINLESS STEEL ANCHOR BOLTS, FLAIR FITTING 6" FROM BOTTOM AND SCREWED FLANGE, SHORT NIPPLE AND BRONZE CAP ABOVE CONCRETE SLAB COVER
- 52 16" SQ. FIBERGLASS GRATING CAST INTO FILLET
- 53 6"
- 54 3/4" DIA. S.S. ANCHOR BOLTS - 2" PROJECTION (SEE MANUFACTURERS SPECIFICATIONS FOR LOCATION)
- 55 5'-0" MIN. OR AS NOTED ON PLANS
- 56 1 1/2" PVC SCHEDULE 40 VALVE VAULT DOOR FRAME DRAIN TO FLOOR DRAIN
- 57 30"x48" STANDARD DUTY (LIVE LOAD 300 psf) SINGLE LEAF ALUM. ACCESS DOOR WITH SAFETY HATCH ACCESSORIES INCLUDING RECESS STEEL SNAP LOCK, AND STAINLESS STEEL HARDWARE (AS SUPPLIED BY FLYGT). FINISH PAINT WITH 1 COAT OF PRIME AND 2 COATS MATTE GREY RUST PROOF PAINT. FRAME TO BE 8" IN DEPTH AND CAST FLUSH WITH REINFORCED FLAT SLAB COVER.
- 58 42" MIN.
- 59 FIBERGLASS REINFORCED PLASTIC LADDER (STEPS 12" O.C.)
- 60 6" DUCTILE IRON PIPE, CLASS 52
- 61 ADJUSTABLE SADDLE PIPE SUPPORT - CRADLE PIPE AT FLANGED JOINTS. GALV. STEEL CONSTRUCTION, ANCHORABLE BASE PLATE WITH UNIFORM ANCHORS
- 62 18" MIN.
- 63 4" D.I. PLUG VALVE (1/4 TURN BALL STYLE) WITH FLANGED ENDS & FIXED HAND LEVEL ACTUATOR (TYP.)
- 64 4" MUELLER CHECK VALVES - SWING TYPE LEVER AND WEIGHT WITH FLANGED ENDS. (TYP.)
- 65 SLOPE FLOOR TO DRAIN WITH NON-SHRINK GROUT
- 66 8" DIAMETER PRECAST CONCRETE BASE WITH BARREL WALL SECTIONS
- 67 FIBERGLASS SAFETY PLATFORM (SEE SAFETY GRATING NOTES ON PUMP STATION PLAN DRAWING) 1 1/2" SQ. BY 1 1/2" FIBERGLASS REINFORCED PLASTIC GRATING DURADEK OR APPROVED EQUIVALENT
- 68 TOP OF FIBERGLASS SAFETY GRATING ELEVATION
- 69 FIBERGLASS REINFORCED "I" BEAM EXTRON ® OR APPROVED EQUIVALENT
- 70 FIBERGLASS REINFORCED OR STAINLESS STEEL SUPPORT RING
- 71 4" x 6" MECHANICAL JOINT D.I.P. CLASS 52, REDUCER
- 72 COUPLING TO CONNECT DUCTILE IRON PIPE TO P.V.C. PIPE, 6" DIA. TRANSITION SLEEVE OR APPROVED EQUAL
- 73 6" PVC SDR-21 FORCEMAIN PIPE W/ #10 GA. TRACER WIRE WRAP AND SECURED TO THE ACCESS HATCH FRAME
- 74 SEALED MERCURY SWITCH LEVEL CONTROLS (FLYGT ENH-10 OR APPROVED EQUAL)



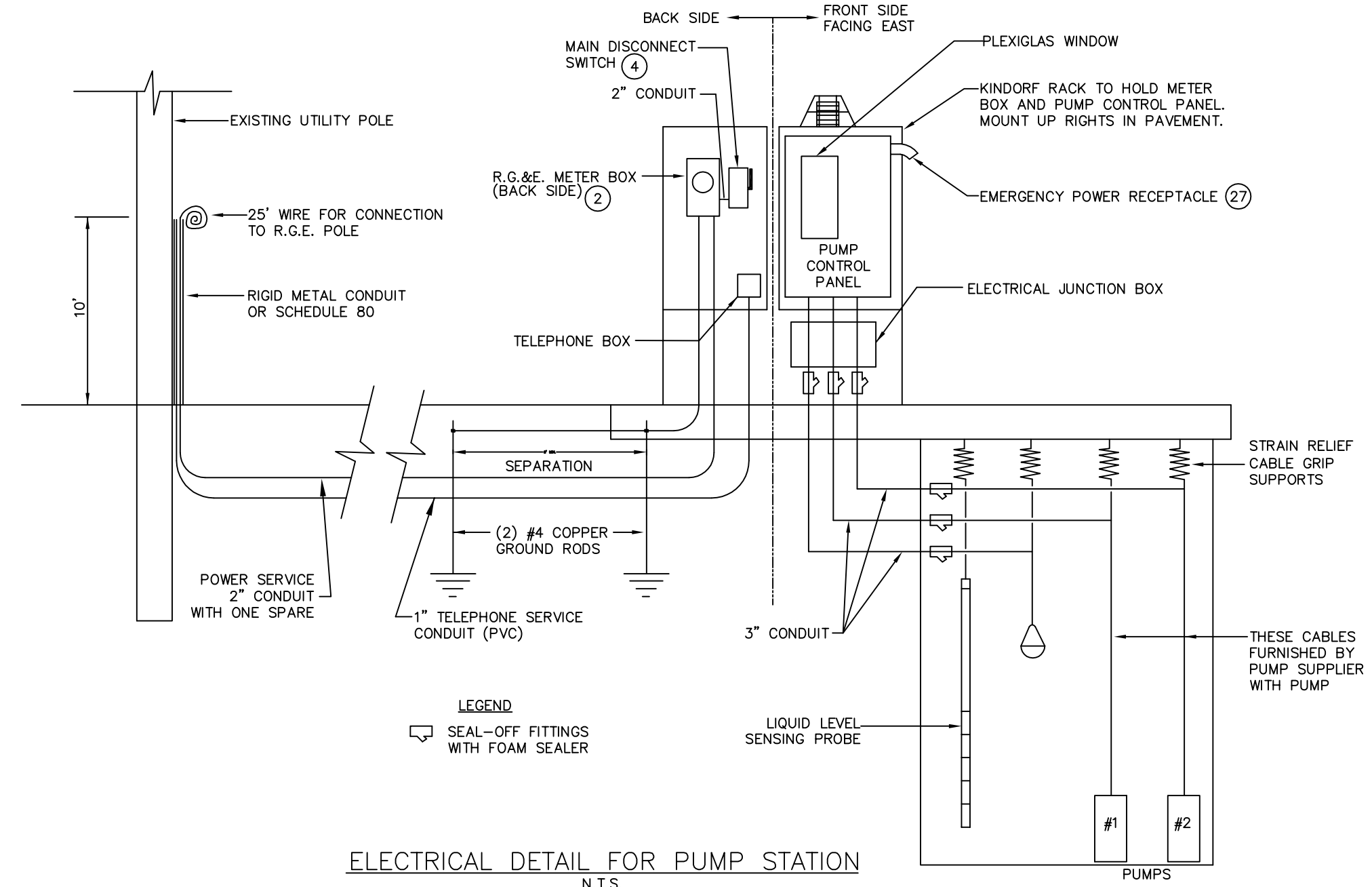
**PUMP STATION & VALVE VAULT**

N.T.S.

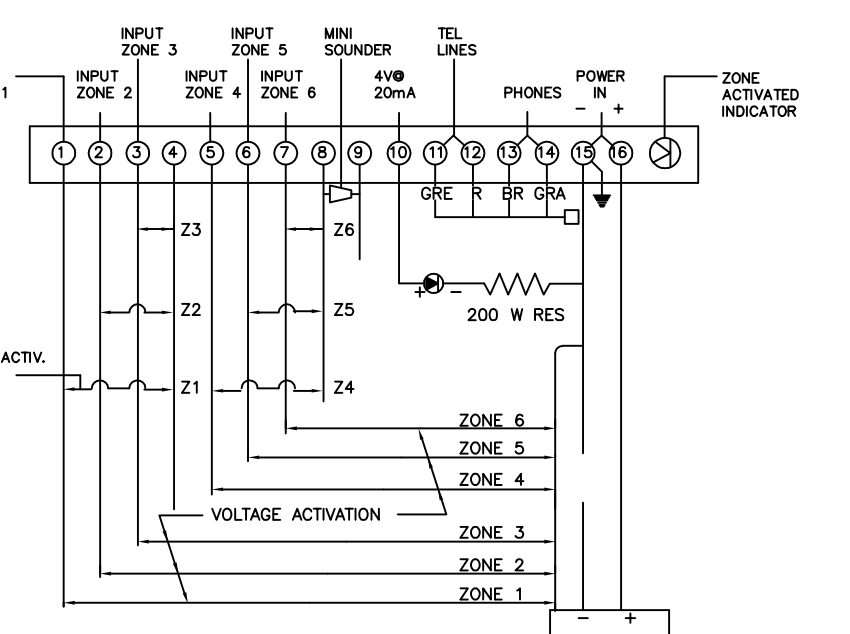
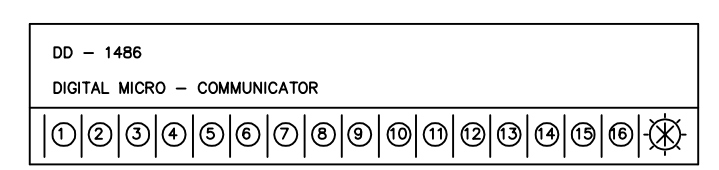
TABLE OF INVERTS	ELEVATION	ORIENTATION (N,S,E,W)
(A) _____ DISCHARGE PIPES - INVERT ELEVATION	0	N/A
(B) HIGH WATER ALARM LEVEL - ELEVATION	0	N/A
(C) TURN ON TWO PUMPS - ELEVATION	0	N/A
(D) TURN ON ONE PUMP - ELEVATION	0	N/A
(E) TURN OFF LEVEL - ELEVATION	0	N/A
(F) BOTTOM OF WET WELL - ELEVATION	0	N/A
(G) _____ INFLUENT INVERT ELEVATION	0	N/A
(H) _____ INFLUENT BOTTOM PIPE-ELEVATION	0	N/A
(I) BOTTOM OF VALVE VAULT - ELEVATION	0	N/A
(J) TOP OF HATCH / TOP SLAB - ELEVATION	0	N/A
(K) VALVE VAULT DRAIN PIPE - INVERT ELEVATION	0	N/A
(L) _____ DISCHARGE PIPE - INVERT ELEVATION	0	N/A
(M) SAFETY PLATFORM - ELEVATION	0	N/A



**CONDUIT TRENCH INSTALLATION DETAIL**  
N.T.S.



**ELECTRICAL DETAIL FOR PUMP STATION**  
N.T.S.



- INPUT ZONE 1 = POWER FAILURE
- INPUT ZONE 2 = HIGH LEVEL FLOAT
- INPUT ZONE 3 = MOTOR 1 (MOTOR STARTER)
- INPUT ZONE 4 = MOTOR 2 (MOTOR STARTER)
- INPUT ZONE 5 = BOTH PUMPS ON (WITH ADJUSTABLE DELAY TIMER 5 - 15 MINUTES) (CONNECT BOTH MOTOR STARTER AUXILIARY CONTACTS)
- INPUT ZONE 6 = HIGH LEVEL WET WELL (CONNECT TO TOWN OF HENRIETTA CIRCUIT)

1. THE "MINISOUNDER" AND LIGHT ON COMMUNICATOR ARE BOTH TO BE ACTIVATED WHEN SYSTEM IS DIALING OUT.
2. PROVIDE DEDICATED TELEPHONE LINE WITH A WALL MOUNTED TELEPHONE (RADIO SHACK ET 282 TOUCHTONE OR APPROVED EQUAL). CANNOT CALL IN WHEN DIALING OUT.
3. THE DEDICATED TELEPHONE LINE SHALL HAVE "LINE SEIZURE", i.e. CANNOT CALL IN WHEN DIALING OUT.
4. AN ACCESSORY G.F.I. OUTLET (15amps, 110v) SHOULD BE PROVIDED ON THE PANEL.
5. THE COMMUNICATOR MUST BE WIRED DIRECT TO THE ELECTRIC SERVICE (WITHOUT BEING A SUBSIDIARY CIRCUIT WITHIN THE PANEL).
6. NAPCO COMMUNICATORS AND U.S. MONITOR SERVICE ONLY WILL BE ACCEPTED.  
U.S. MONITOR SERVICE  
130 CEDAR STREET  
NEW YORK, N.Y. 10006
7. A TWO YEAR LABOR AND EQUIPMENT WARRANTY MUST BE PROVIDED ON THE COMMUNICATOR AND INSTALLATION.

**DIGITAL MICRO-COMMUNICATOR**  
N.T.S.

- NOTES:**
1. THE CONTROL PANEL CONTRACTOR TO PROVIDE 12" X 12" VACANT SPACE INSIDE CONTROL PANEL FOR DIGITAL MICRO-COMMUNICATOR EQUIPMENT.
  2. TOWN OF HENRIETTA WILL HAVE THE COMMUNICATOR EQUIPMENT INSTALLED WITH THE DEVELOPER OR CONTRACTOR PAYING THE INSTALLATION COST OF \$1,200.00.

Scale N.T.S.  
Date SEPTEMBER 13, 2006  
Job No. \_\_\_\_\_  
Designed by M.S.B.  
Drawn by J.J.D.  
Checked by M.S.B.  
Approved by M.S.B.

REVISIONS

No.	Description	Date
1 <td>Added Safety Platform Elevation <td>7/13/09 </td></td>	Added Safety Platform Elevation <td>7/13/09 </td>	7/13/09
2 <td> <td> </td></td>	<td> </td>	

**TOWN OF HENRIETTA**

**TOWN OF HENRIETTA**  
475 CALKINS ROAD  
HENRIETTA, N.Y. 14467

PUMP STATION ELEVATION

Sheet No. 1 OF 2  
DWG. NO. PS-1