

PUMP STATION NOTES:

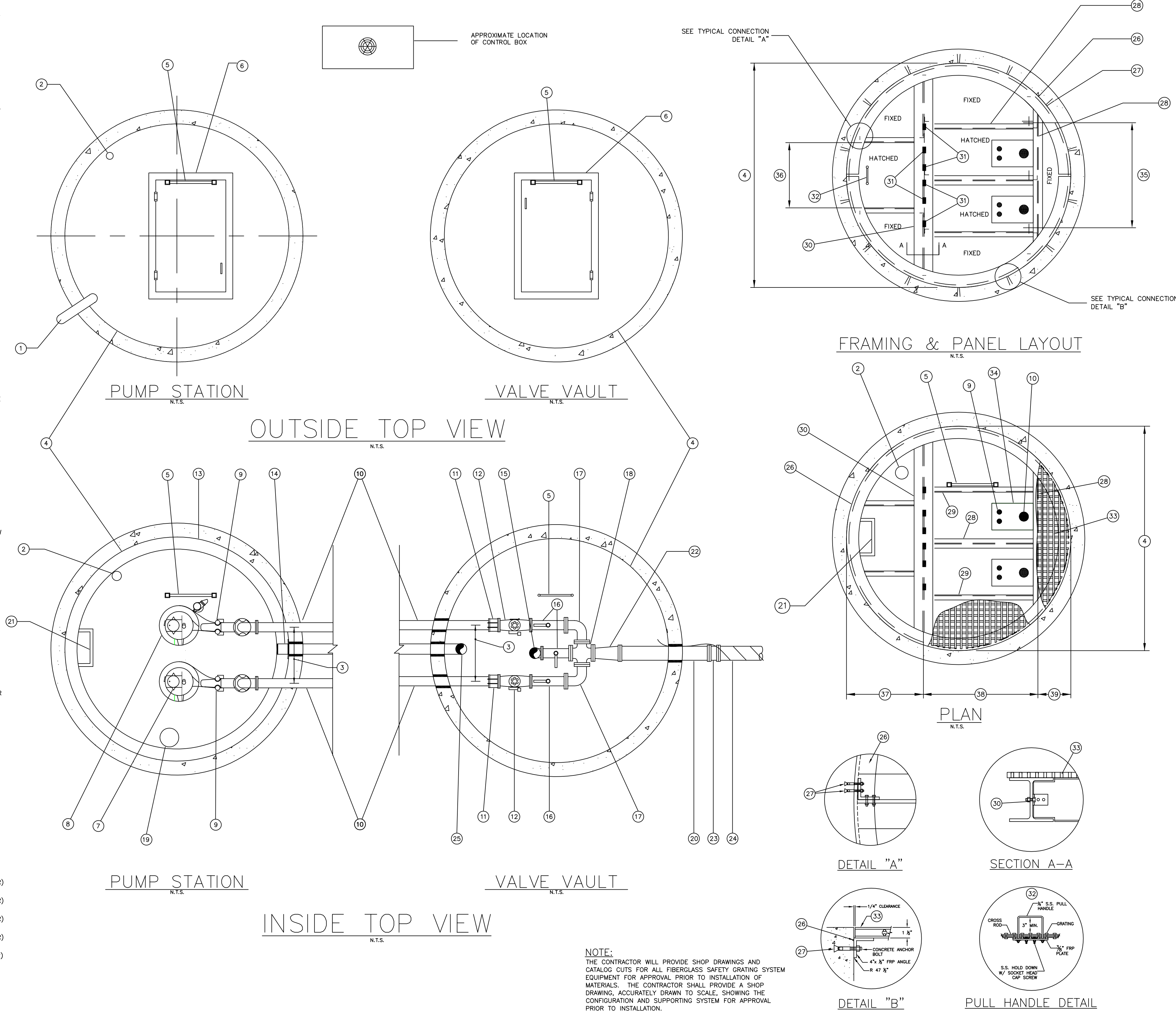
- THE ELECTRICAL EQUIPMENT SHALL COMPLY WITH 32.35, 34.31, 34.32 & 34.33 OF THE TEN STATE STANDARDS. ALL ELECTRICAL EQUIPMENT IN RAW SEWAGE WET WELLS SHALL COMPLY WITH THE NATIONAL ELECTRICAL CODE REQUIREMENTS FOR CLASS I GROUP D, DIVISION I LOCATIONS. PUMP MOTOR POWER CORDS SHALL BE DESIGNED FOR FLEXIBILITY AND SERVICEABILITY UNDER CONDITIONS OF EXTRA HARD USAGE AND SHALL MEET THE REQUIREMENTS OF THE MINE SAFETY AND HEALTH ADMINISTRATION FOR TRAILING CABLES. GROUND FAULT INTERRUPTION PROTECTION SHALL BE USED TO DE-ENERGIZE THE CIRCUIT IN THE EVENT OF ANY FAILURE IN THE ELECTRICAL INTEGRITY OF THE CABLE. ALL ELECTRICAL WORK SHALL BE PERFORMED IN COMPLIANCE WITH N.Y. STATE UNIFORM FIRE PREVENTION AND BUILDING CODE AND ALL APPLICABLE LOCAL CODES. A CERTIFICATE OF APPROVAL SHALL BE OBTAINED FROM THE N.Y. STATE BOARD OF FIRE UNDERWRITERS.
- ELECTRICAL CONTROLS TO BE UNDERWRITERS APPROVED AND ALL BUTTONS, SWITCHES, ETC. SHALL BE ENCLOSED WITHIN THE PANELS ALL PANELS TO BE PROVIDED WITH LOCKING HASP (FOR TOWN PADLOCK) PADLOCKS SUPPLIED BY CONTRACTOR.
- A GAS SEAL OFFS MUST BE PROVIDED IN THE JUNCTION BOX BETWEEN THE JUNCTION BOX AND CONTROL PANEL.
- PUMP STATION SEWAGE WETWELL SHALL BE EQUIPPED WITH INTRINSICALLY SAFE RELAYS.
- PUMPS SHALL BE EXPLOSION PROOF. WRITTEN CERTIFICATION TO BE PROVIDED WITH EACH PUMP INCLUDING SERIAL NUMBER.
- ELECTRICAL CONTROL PANEL IS TO HAVE SQUARE D STARTERS, BREAKERS AND RELAYS. ALL CONTROL TRANSFORMERS TO BE FUSED PROPERLY AS PER NATIONAL ELECTRICAL CODE (N.E.C.). CONTROL PANEL SHALL BE CONSTRUCTED USING SQUARE D EQUIPMENT UNLESS OTHERWISE SPECIFIED. THE CONTROL PANEL SHALL BE CONNECTED TO AN 20 AMP GROUND FAULT INTERRUPTER CIRCUIT.
- ALTERNATING RELAYS SHALL BE INSTALLED. DUPLEX PUMP CONTROLLER MT2 PC AS MANUFACTURED BY MULTITRODE. RUNNING TIME METERS & DIGITAL AMP PANEL METERS FOR PUMPS SHALL BE INSTALLED. PUMPS SHALL BE CAPABLE OF RUNNING DRY WITHOUT DAMAGE OR BE PROTECTED AGAINST SUCH CONDITIONS.
- ALL VENTS AND HATCHES SHALL BE SEALED WATER TIGHT WITH SEALANT.
- CONTRACTOR IS RESPONSIBLE FOR WATER TIGHTNESS OF WETWELL AND PIPING. THIS SHALL BE AIR TESTED ALONG WITH REMAINDER OF SANITARY SEWERS AS PER TOWN STANDARDS.
- CONTRACTOR TO CONSULT PIPE AND EQUIPMENT MANUFACTURERS FOR PROPER INSTALLATION.
- TELEMETERING EQUIPMENT SHALL BE INSTALLED IN ACCORDANCE WITH THE EXISTING TOWN OF HENRIETTA SYSTEM SO THAT THE OPERATION OF THE PUMPING STATION MAY BE MONITORED AT THE TOWN'S MAINTENANCE FACILITY. THE TELEMETERING EQUIPMENT WILL BE INSTALLED BY THE TOWN OF HENRIETTA OR SUB-CONTRACTOR BUT PAID FOR BY THE CONTRACTOR OR DEVELOPER OF THIS PROJECT.
- ALL FITTINGS, BARS, BRACKETS, BOLTS, NUTS, ETC., INSIDE OF WETWELL SHALL CONFORM TO CONCRETE ACCESSORIES, ASTM A-582.
- THE CONTRACTOR WILL PROVIDE SHOP DRAWINGS AND CATALOG CUTS FOR ALL EQUIPMENT (PUMPS, CONTROLS, PANEL BOX, CIRCUIT DIAGRAM, VALVES, MANHOLES, ACCESS DOORS, ETC.) FOR APPROVAL PRIOR TO INSTALLATION OF MATERIALS. THE CONTRACTOR SHALL PROVIDE A SHOP DRAWING, ACCURATELY DRAWN TO SCALE, SHOWING THE PUMPS, PUMP ANCHOR BOLT PLAN, VALVE PIPING CABLE HOLDERS, ACCESS DOORS, GUIDE BARS, ACCESS COVER, ETC. FOR BOTH THE PUMP STATION AND THE VALVE PIT FOR APPROVAL PRIOR TO INSTALLATION.
- ALL PIPE AND FITTINGS WITHIN THE PUMP STATION AND VALVE PIT SHALL BE FLANGED JOINT AND ALL EXTERIOR PIPING SHALL BE MECHANICAL JOINTS.
- ALL PIPE OPENINGS THRU THE WETWELL & VALVE PIT SHALL BE LINK SEAL JOINTS. PIPE OPENINGS SHALL BE 12" MIN. FROM MANHOLE JOINTS.
- IDENTICAL SPARE PUMP TO BE PROVIDED FOR EACH PUMP STATION INSTALLATION CONFORMING TO ALL OTHER REQUIREMENTS LISTED HEREIN.
- IF P.V.C. PIPE IS USED, TRACING WIRE SHALL BE INSTALLED IN TRENCH ALONG SIDE OF PIPE.
- PUMP DESIGN CRITERIA: (LIST 3 MIN.)

	G.P.M.	I.D.H.
1.	_____	_____
2.	_____	_____
3.	_____	_____

 NOTE: OPERATING PRESSURE = _____ psi
- ALL HARDWARE WITHIN THE WETWELL MUST BE STAINLESS STEEL EXCEPT THE LADDER AND DISCHARGE PIPING.
- DETAILS ARE NOT TO SCALE - USE DIMENSIONS AND ELEVATIONS SHOWN FOR CONSTRUCTION.
- MICRO-COMMUNICATOR SHALL BE PROVIDED & INSTALLED AS PER TOWN OF HENRIETTA STANDARD (SEE DETAIL ON PUMP STATION ELEVATION DRAWING)
- COMPACTION SHALL BE IN 6" LIFTS COMPACTED TO 95% OPTIMUM SOIL DENSITY.
- A TWO YEAR LABOR AND EQUIPMENT WARRANTY MUST BE PROVIDED ON ALL OF THE SUBMERSIBLE SEWAGE PUMPS.
- PROVIDE ONE KOHLER MODEL 20RE02J TRAILER MOUNTED DIESEL GENERATOR 120/240 VOLT 3 PHASE 4 WIRE INCLUDING CONNECTION MEETING TOWN SPECIFICATIONS DELIVERED TO THE TOWN OF HENRIETTA.

PUMP STATION LEGEND

- 4" STEEL VENT PIPE WITH BIRD SCREEN PAINTED 2 COATS BATTLESHIP GREY
- 3" DUCTILE IRON SUCTION PIPE CLASS 52 WITH SHORT NIPPLE & BRONZE CAP
- CONTRACTOR TO VERIFY CENTERLINE DISTANCES BETWEEN PIPES PRIOR TO ORDERING PRECAST CONCRETE MANHOLE
- 8" INSIDE DIA. PRECAST CONCRETE MANHOLE
- FIBERGLASS REINFORCED PLASTIC LADDER MOUNTED TO UNDER SIDE OF TOP SLAB (STEPS 12" O.C.)
- 30"x48" STANDARD DUTY (LIVE LOAD 300 psf) SINGLE LEAF ALUM. ACCESS DOOR WITH SAFETY HATCH ACCESSORIES INCLUDING RECESS STEEL SNAP LOCK, AND STAINLESS STEEL HARDWARE (AS SUPPLIED BY FLYGT). FINISH PAINT WITH 1 COAT OF PRIME AND 2 COATS MATTE GREY RUST PROOF PAINT. FRAME TO BE 8" IN DEPTH AND CAST FLUSH WITH REINFORCED CONCRETE FLAT SLAB COVER.
- DUPLEX ITT FLYGT SUBMERSIBLE PUMP
- DUPLEX ITT FLYGT SUBMERSIBLE PUMP WITH MIX FLUSH VALVE (ITT FLYGT 4901)
- STAINLESS STEEL PUMP GUIDE BARS, SEE MANUFACTURER'S LITERATURE FOR LOCATIONS
- 4" DISCHARGE PIPING (D.I.P. CLASS 52 FLANGE JOINT & FITTINGS)
- 4" FLANGED D.I.P. ADAPTOR STYLE 127 DRESSER OR APPROVED EQUAL
- 4" CHECK VALVE-SWING TYPE LEVER AND WEIGHT MUELLER OR APPROVED EQUAL.
- 4000 PSI CONCRETE FILLET
- 4" FLANGED FLAP VALVE WITH BRONZE SEAT
- DISCHARGE FOR SUCTION HOSE 3"x4" FLANGED D.I.P. CONCENTRIC INCREASER, 4" FLANGED D.I.P. JOINT 90° BEND, SCREWED FLANGED, SHORT NIPPLE AND BRONZE CAP
- 4" DUCTILE IRON PLUG VALVE (1/4 TURN BALL STYLE FULL PORT) WITH REMOVABLE LEVER ACTUATOR (TYP.) MUELLER OR APPROVED EQUAL
- 4" DUCTILE IRON PIPE ELBOW WITH ADJUSTABLE GALVANIZED PIPE SUPPORTS TYP. (BOTH SIDES)
- 4" DUCTILE IRON PIPE FLANGED CROSS
- ___ INFLUENT PIPE
- 6" DUCTILE IRON PIPE, CLASS 52
- COPOLYMER POLYPROPYLENE PLASTIC STEPS BELOW FIBERGLASS SAFETY PLATFORM
- 4" X 6" MECHANICAL JOINT, D.I.P., CLASS 52, REDUCER
- COUPLING TO CONNECT DUCTILE IRON PIPE TO P.V.C., PIPE 6" DIA. TRANSITION SLEEVE OR APPROVED EQUAL
- 6" P.V.C. SDR-21 FORCEMAIN PIPE WITH NO. 10 TRACER WIRE
- 4" FLOOR DRAIN, "P" TRAP AND INTEGRAL BALL CHECK VALVE
- 4"x4"x1/2" FIBERGLASS REINFORCED STRUCTURAL RING OR 3"x3"x1/4" STAINLESS STEEL ANGLE CUT IN HALF FOR INSTALLATION
- 14 PRE-DRILLED EQUAL SPACE 5/8" Ø HOLES FOR 1/2" STAINLESS STEEL EXPANSION BOLTS
- 8"x4"x1/4" FIBERGLASS REINFORCED PLASTIC "I" BEAM
- 8"x2"x1/4" FIBERGLASS REINFORCED PLASTIC CHANNEL
- 8"x8"x1/2" FIBERGLASS REINFORCED PLASTIC "I" BEAM
- STAINLESS STEEL HINGES FOR HATCHES
- STAINLESS STEEL PULL HANDLE AND HARDWARE
- 1 1/2" SQ. BY 1 1/2" THICK FIBERGLASS REINFORCED PLASTIC GRATING SECURED W/ STAINLESS STEEL SADDLE HOLD DOWN CLIPS
- GRATE OPENING FOR PUMP POWER CORD, GUIDE BARS, LIFTING CHAIN AND DISCHARGE PIPING
- 3'-9" (DIMENSION TO BE VERIFIED BY CONTRACTOR)
- 2'-0" (DIMENSION TO BE VERIFIED BY CONTRACTOR)
- 2'-9" (DIMENSION TO BE VERIFIED BY CONTRACTOR)
- 4'-1" (DIMENSION TO BE VERIFIED BY CONTRACTOR)
- 1'-2" (DIMENSION TO BE VERIFIED BY CONTRACTOR)



NOTE:
THE CONTRACTOR WILL PROVIDE SHOP DRAWINGS AND CATALOG CUTS FOR ALL FIBERGLASS SAFETY GRATING SYSTEM EQUIPMENT FOR APPROVAL PRIOR TO INSTALLATION OF MATERIALS. THE CONTRACTOR SHALL PROVIDE A SHOP DRAWING, ACCURATELY DRAWN TO SCALE, SHOWING THE CONFIGURATION AND SUPPORTING SYSTEM FOR APPROVAL PRIOR TO INSTALLATION.

Scale		Date		Job No.		Designed by		Drawn by		Checked by		Approved by			
N.T.S.		SEPTEMBER 13, 2006				M.S.B.		J.J.D.		M.S.B.		M.S.B.			
												Description		Date	
												REVISIONS			
												TOWN OF HENRIETTA			
												PUMP STATION PLAN			
												Sheet No.		2 OF 2	
												DWG. NO.		PS-2	

TOWN OF HENRIETTA
475 CALKINS ROAD
HENRIETTA, N.Y. 14467