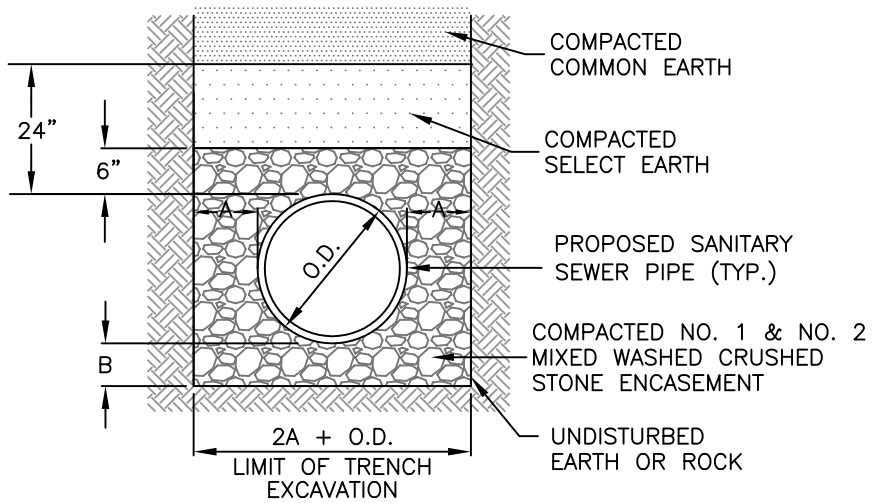


\\0server\user folders\Town Projects\AutoCAD Projects\Non-Town Wide\Details\Sanitary\SA-01\PipeBedding.dwg

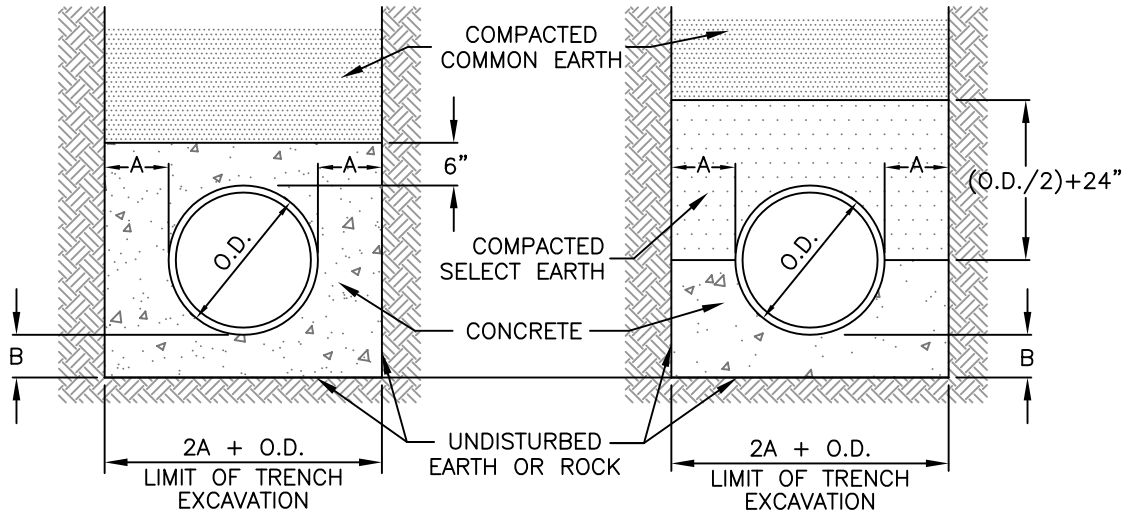


TYPICAL SANITARY BEDDING DETAIL

PIPE DIA.	A	B
UP TO 18"	12"	6"
21" TO 36"	18"	9"
OVER 36"	24"	12"


NOTES:

1. ALL SANITARY SEWER PIPE SHALL BE 8" MINIMUM PIPE DIAMETER, POLYVINYL CHLORIDE PIPE (PVC SDR-35), BELL & SPIGOT TYPE & RUBBER GASKET.
2. ALL SANITARY LATERAL PIPE SHALL BE 4" MINIMUM PIPE DIAMETER, POLYVINYL CHLORIDE PIPE (PVC SDR-21), BELL & SPIGOT TYPE & RUBBER GASKET OR SCHEDULE 40.
3. SELECT EARTH SHALL BE SAND GRAVEL AND SIMILAR MATERIAL WHICH SHALL BE FREE FROM CLAY, LOAM, ORGANIC MATERIAL, DEBRIS, FROZEN MATERIAL AND SHALL CONTAIN ONLY SMALL AMOUNTS OF STONE, PEBBLES OR LUMPS OVER ONE INCH IN GREATEST DIMENSION BUT NONE OVER TWO INCHES IN GREATEST DIMENSIONS.
4. STONE ENCASUREMENT SHALL MEAN APPROVED IMPORTED AGGREGATE MEETING THE REQUIREMENTS OF THE NYSDOT, STANDARD SPECIFICATION, MAY 1, 2008 EDITION PAGES 7-14, SUBSECTION 703-0201 "CRUSHED STONE". PRIMARY SIZE OR A MIXTURE OF PRIMARY SIZES 1 AND 2.
5. CONCRETE SHALL BE CAST-IN-PLACE CLASS "A" MEETING NYSDOT SECTION 501 SPECIFICATIONS.



CONCRETE ENCASEMENT

CONCRETE CRADLE

 TOWN OF HENRIETTA	TYPICAL SANITARY PIPE BEDDING DETAILS	
	SCALE: N.T.S.	
	DATE: 11/15/2011	
		SA-01