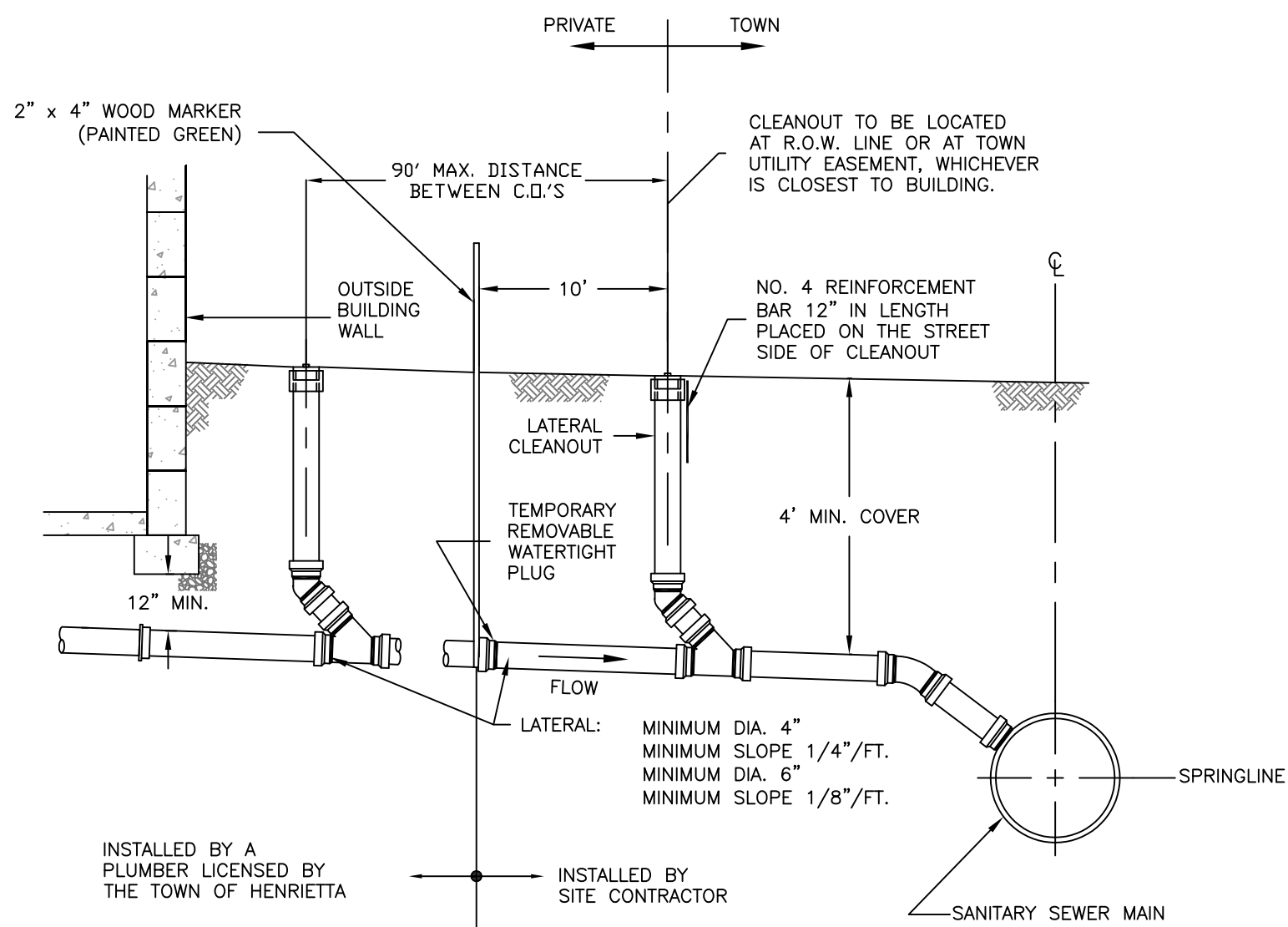


\\server\user\Town Projects\AutoCAD Projects\Non-Town Wide\Details\Sanitary\SA-04\TypicalHouseLateralProfile.dwg



NOTES:

1. WHEN THE SEWER MAIN IS LESS THAN 8 FT. IN DEPTH, THE LATERAL SHALL HAVE A CONSTANT GRADE TO THE SEWER MAIN CONNECTION.
2. WHEN THE SEWER MAIN IS GREATER THAN 8 FT. IN DEPTH, A RISER SECTION MAY BE USED TO CONNECT THE CONSTANT GRADE LATERAL WITH THE SEWER MAIN.
3. FOR "HUNG" PLUMBING, PROVIDE 4' MIN. COVER OVER LATERAL AT THE BASEMENT WALL AND ALONG THE ROUTE OF THE LATERAL.
4. THE MATERIAL FOR THE SANITARY LATERAL SHALL BE PVC SDR-21.

INSTALLED BY A
PLUMBER LICENSED BY
THE TOWN OF HENRIETTA

INSTALLED BY
SITE CONTRACTOR



TYPICAL HOUSE SANITARY LATERAL PROFILE

SCALE: N.T.S.

DATE: 11/15/2011

SA-04