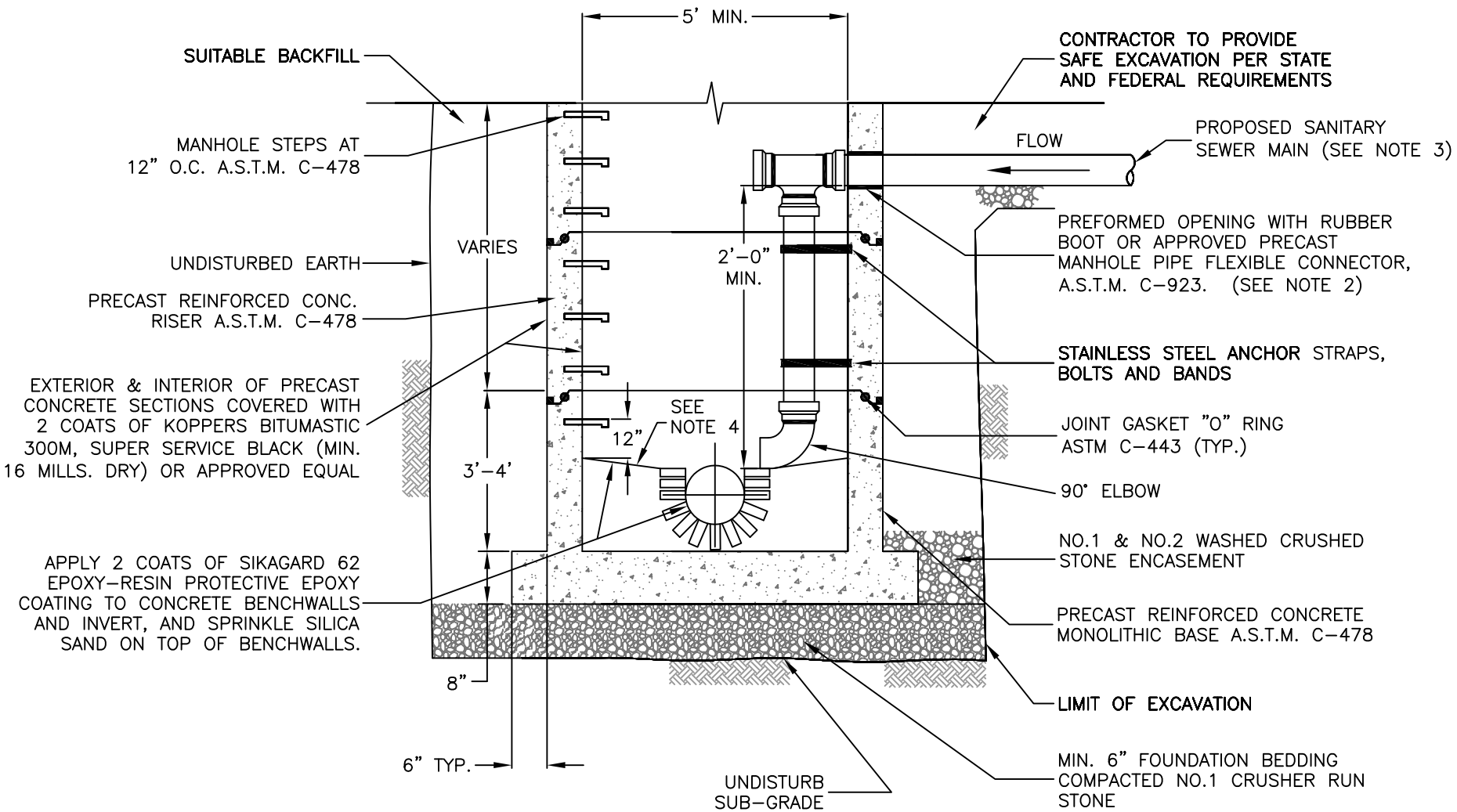



\\server\user folders\Town Projects\AutoCAD Projects\Non-Town Wide\Details\Sanitary\USA-13a\InsideDropManhole.dwg



**NOTES:**

1. ALL STANDARD MANHOLE SPECIFICATIONS APPLY TO THIS MANHOLE.
2. CORE DIAMETER HOLE TO ACCOMMODATE EPOXY SAND COLLAR HUB (P.V.C.) OR P.V.C. EMBEDDED INTO MANHOLE AND SEALED WITH EPOXY MORTAR DURAL 33 OR APPROVED EQUAL. NO IMPACT DEVICES WILL BE ALLOWED TO BE USED FOR MAKING NEW HOLES.
3. A SANITARY LATERAL CONNECTION MUST BE APPROVED BY TOWN ENGINEER.
4. CONCRETE BENCHWALL SLOPE 1/2"/FT.

 TOWN OF HENRIETTA	<b>INSIDE DROP MANHOLE</b>	
	SCALE: N.T.S.	<b>SA-13a</b>
	DATE: 11/15/2011	