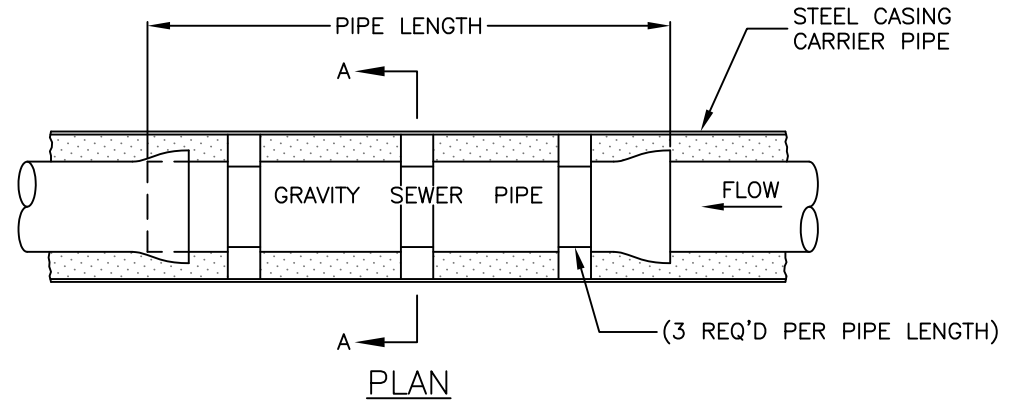
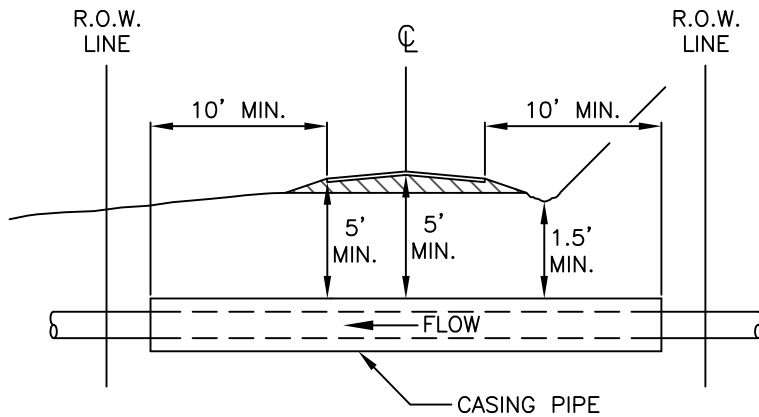


\\0server\user folders\Town Projects\AutoCAD Projects\Non-Town Wide\Details\Sanitary\SA-19\Boring.dwg



NOTES:

1. THE CONTRACTOR SHALL OBTAIN ALL NECESSARY HIGHWAY PERMITS TO COMPLETE THE WORK FROM N.Y.S.D.O.T., D.P.W., M.C.D.O.T., AND TOWN OF HENRIETTA. ALL WORK SHALL MEET THE APPROVAL OF THE N.Y.S.D.O.T. RESIDENT ENGINEER, M.C.D.O.T. ENGINEERS, OR TOWN ENGINEER.
2. ALL APPROVED HIGHWAY WORK PERMITS SHALL BE OBTAINED FROM THE PROPER AGENCIES PRIOR TO COMMENCING OF WORK. HAVING JURISDICTION HIGHWAY WORK PERMIT MUST BE ON-SITE AT ALL TIMES.
3. BOTH CASING PIPE ENDS SHALL BE BULLHEAD WITH BRICK MASONRY.
4. STEEL CASING CARRIER PIPE SHALL BE CONTINUOUSLY WELDED STEEL PIPE PER A.S.T.M. A-139 GRADE B WITH A MINIMUM YIELD STRENGTH OF 36,000 PSI, A MINIMUM TENSILE STRENGTH OF 60,000 PSI, & A MINIMUM WALL THICKNESS OF 0.375" (3/8").
5. STEEL CASING SHALL BE COATED ON INTERIOR & EXTERIOR WITH 2 COATS OF COAL TAR.
6. STEEL CASING VOID SHALL BE TOTALLY FILLED BY ACCEPTABLE MECHANICAL EQUIPMENT.
7. IF DETERMINED ACCEPTABLE BY TOWN ENGINEER, CONTRACTOR MAY SUBSTITUTE BANDED TIMBERS (ALTERNATE A) IN LIEU OF STAINLESS STEEL CASING SPACERS.

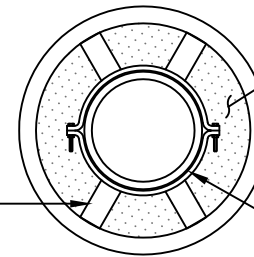
STEEL CASING CARRIER PIPE TO BE INSTALLED AT THE REQ'D MINIMUM SLOPE SHOWN ON THE PLANS.

FILL VOID WITH SAND, PEA-GRAVEL OR "K-CRETE" OR EQUAL AS REQ'D BY THE GOVERNING AGENCY.

STAINLESS STEEL CASING SPACER WITH ADJUSTABLE POLYMER RUNNERS AS MANUFACTURED BY CASCADE MFG. OR APPROVED EQUAL

STEEL CASING CARRIER PIPE - 24" DIA. MIN.

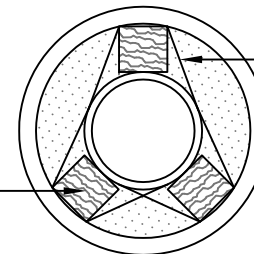
GRAVITY SEWER PIPE




SECTION A-A

TIMBERS SHALL BE STRAPPED TO PIPE WITH 3 - 1" WIDE STEEL BANDS. USE SEPERATE TIE DOWN BANDS FOR EACH SUPPORT TIMBER.

18" LONG 4"x4" P.T. OR HARDWOOD TIMBERS 3 REQUIRED PER LENGTH OF PIPE



ALTERNATE

 TOWN OF HENRIETTA	SANITARY PIPE BORING OR JACKING	
	SCALE: N.T.S.	SA-19
	DATE: 11/15/2011	