

GALVANIZED RETICULINE TYPE FRAME & GRATE SECURED TO TOP SLAB NO. 9 SEE NYS DOT STANDARD SHEET 655-3

PRECAST CONC. GRADE RINGS - MAX. 8" WITH CEMENT MORTAR ALL AROUND AND 2 COATS OF DURALKOTE 500 ULTRA HIGH BUILD EPOXY LINER OR APPROVED EQUAL.

PRECAST REINFORCED CONC. TOP SLAB A.S.T.M. C-478

LIMIT OF EXCAVATION

EXTERIOR & INTERIOR OF PRECAST CONC. SECTIONS COVERED WITH TWO COATS OF KOPPERS BITUMASTIC 300M, SUPER SERVICE BLACK (MIN. 16 MILLS DRY) OR APPROVED EQUAL

STEEL REINFORCED COPOLYMER POLYPROPYLENE MANHOLE STEPS AT 12" O.C. (TYP.)

FILL EXTERIOR & INTERIOR OF JOINT WITH NON-SHRINK GROUT & SEALED WITH TWO COATS OF KOPPERS BITUMASTIC SUPER BLACK (MIN. 16 MILLS DRY)

CAST-IN-PLACE 4000 P.S.I. MIN. CONCRETE SMOOTH INVERT & BENCHWALLS UP TO SPRINGLINE OF PIPE

24" DIA. OPENING

FINISHED GRADE

6" TOPSOIL

SUITABLE BACKFILL MATERIAL IN 6" COMPACTED LIFTS

UNDISTURBED EARTH

JOINT GASKET "O" RING A.S.T.M. C-443 (TYP.)

1" SQ. BUTYL JOINT SEALANT (TYP.)

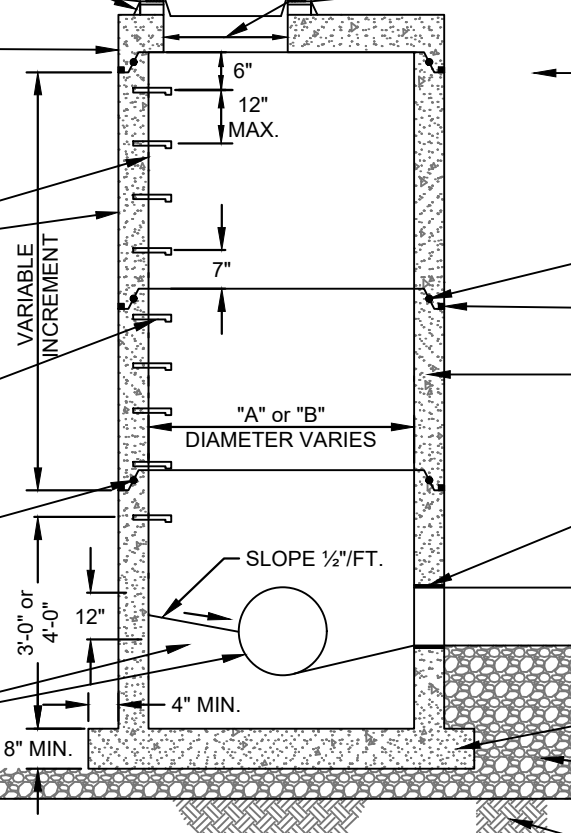
PRECAST REINFORCED CONC. RISER SECTIONS ASTM C-478 (TYP.)

PREFORMED OPENING BY PRECAST MANHOLE MANUFACTURER. FILL VOID WITH NON-SHRINK GROUT OR WITH APPROVED PRECAST MANHOLE FLEXIBLE PIPE CONNECTOR, A.S.T.M. C-923

PRECAST REINFORCED CONC. MONOLITHIC BASE ASTM C-478

MIN. 6" FOUNDATION BEDDING COMPACTED NO. 1 CRUSHER RUN STONE


UNDISTURBED SUB-GRADE



**NOTES:**

1. REFER TO MANHOLE INVERT CONFIGURATION & DIMENSIONS DETAIL FOR MANHOLE DIAMETER "A" OR "B".
2. ALL DETAILS LISTED APPLY TO BOTH TYPES OF MANHOLES.
3. PRECAST CONC. MANHOLE WALL & SLAB MINIMUM THICKNESS  

MANHOLE DIAMETER	4FT.	5FT.	6FT.
A. TOP SLAB	6"	8"	8"
B. RISER WALL	5"	6"	7"
C. BOTTOM SLAB	8"	8"	8"
4. MAXIMUM DISTANCE BETWEEN MANHOLES SHALL BE 400 FEET.
5. UPON COMPLETION & ACCEPTANCE OF STORM INLET MANHOLE THE GRATE SHALL BE BOLTED DOWN FOR PUBLIC SAFETY.

 <b>TOWN OF HENRIETTA</b>	<b>STORM INLET MANHOLE</b>	
	<b>SCALE: N.T.S.</b>	<b>ST-09</b>
	<b>DATE: 9/15/2022</b>	

Z:\AutoCAD Projects\Non-Town Wide\Details\Storm\ST-09\StormInletManhole.dwg